

---

ICS 29.200

English Version

**High-voltage direct current (HVDC) transmission - Vocabulary  
(IEC 60633:2019/COR1:2020)**

Transport d'énergie en courant continu à haute tension  
(CCHT) - Vocabulaire  
(IEC 60633:2019/COR1:2020)

Hochspannungsgleichstrom-Übertragung (HGÜ) - Begriffe  
(IEC 60633:2019/COR1:2020)

This corrigendum becomes effective on 10 April 2020 for incorporation in the English language version of the EN.



European Committee for Electrotechnical Standardization  
Comité Européen de Normalisation Electrotechnique  
Europäisches Komitee für Elektrotechnische Normung

**CEN-CENELEC Management Centre: Rue de la Science 23, B-1040 Brussels**

### **Endorsement notice**

The text of the corrigendum IEC 60633:2019/COR1:2020 was approved by CENELEC as EN IEC 60633:2019/AC:2020-04 without any modification.

INTERNATIONAL ELECTROTECHNICAL COMMISSION  
COMMISSION ÉLECTROTECHNIQUE INTERNATIONALE

---

**IEC 60633**  
Edition 3.0 2019-04

HIGH-VOLTAGE DIRECT CURRENT  
(HVDC) TRANSMISSION –

Vocabulary

**IEC 60633**  
Édition 3.0 2019-04

TRANSPORT D'ÉNERGIE EN COURANT CONTINU À  
HAUTE TENSION (CCHT) –

Vocabulaire

**C O R R I G E N D U M 1**

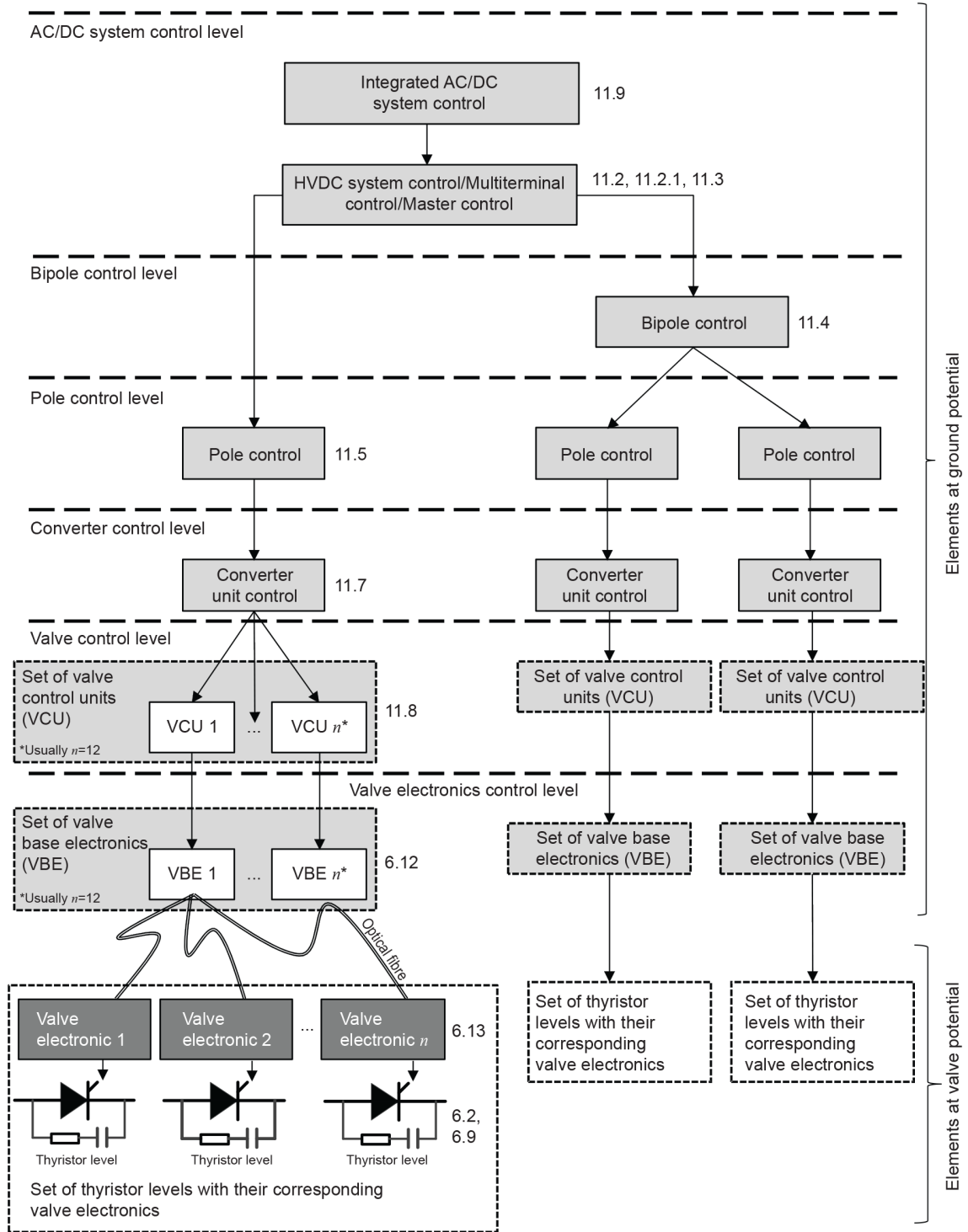
Corrections to the French version appear after the English text.

Les corrections à la version française sont données après le texte anglais.

**Figure 12 – Hierarchical structure of an HVDC control system**

*Replace the existing Figure 12 by the following new figure:*

**Hierarchical structure of an HVDC control system**



IEC

**Key**

- |        |                        |      |                                 |
|--------|------------------------|------|---------------------------------|
| 6.2    | Converter bridge       | 11.3 | HVDC master control             |
| 6.9    | Valve thyristor levels | 11.4 | HVDC system bipole control      |
| 6.12   | Valve base electronics | 11.5 | HVDC system pole control        |
| 6.13   | Valve electronics      | 11.7 | Converter unit control          |
| 11.2   | HVDC system control    | 11.8 | Valve control unit              |
| 11.2.1 | Multiterminal control  | 11.9 | Integrated AC/DC system control |

**Figure 12 – Hierarchical structure of an HVDC control system**