



**INTERNATIONAL STANDARD ISO/IEC/IEEE 8802-  
1AS:2021**  
TECHNICAL CORRIGENDUM 1

Published 2023-01



INTERNATIONAL ORGANIZATION FOR STANDARDIZATION • МЕЖДУНАРОДНАЯ ОРГАНИЗАЦИЯ ПО СТАНДАРТИЗАЦИИ • ORGANISATION INTERNATIONALE DE NORMALISATION  
INTERNATIONAL ELECTROTECHNICAL COMMISSION • МЕЖДУНАРОДНАЯ ЭЛЕКТРОТЕХНИЧЕСКАЯ КОМИССИЯ • COMMISSION ÉLECTROTECHNIQUE INTERNATIONALE

# **Information technology — Telecommunications and information exchange between systems — Local and metropolitan area networks —**

Part 1AS:

## **Timing and synchronization for time-sensitive applications in bridged local area networks**

TECHNICAL CORRIGENDUM 1: Technical and editorial corrections

*Technologies de l'information — Télécommunications et échange d'information entre systèmes — Réseaux locaux et métropolitains — Exigences spécifiques —*

*Partie 1AS: Temporisation et synchronisation pour les applications sensibles au temps des réseaux locaux pontés*

*RECTIFICATIF TECHNIQUE 1:*

Technical Corrigendum 1 to ISO/IEC/IEEE 8802-1AS:2021/Cor 1 was prepared by Joint Technical Committee ISO/IEC JTC 1, *Information technology*, Subcommittee SC 6, *Telecommunications and information exchange between systems*, in collaboration with IEEE. The identical text is published as IEEE 802.1AS-2020/Cor 1-2021.



**IEEE Standard for  
Local and Metropolitan Area Networks—**

**Timing and Synchronization for  
Time-Sensitive Applications**

**Corrigendum 1: Technical and  
Editorial Corrections**

Developed by the

**LAN/MAN Standards Committee  
of the  
IEEE Computer Society**

Approved 8 December 2021

**IEEE SA Standards Board**

**Abstract:** Technical and editorial corrections to IEEE Std 802.1AS™-2020 are provided in this corrigendum.

**Keywords:** best master, frequency offset, Grandmaster Clock, Grandmaster PTP Instance, PTP End Instance, PTP Relay Instance, IEEE 802.1AS™, phase offset, synchronization, syntonization, time-aware system

---

The Institute of Electrical and Electronics Engineers, Inc.  
3 Park Avenue, New York, NY 10016-5997, USA

Copyright © 2022 by The Institute of Electrical and Electronics Engineers, Inc.  
All rights reserved. Published 28 April 2022. Printed in the United States of America.

MoCA is a registered trademark of the Multimedia over Coax Alliance.

POSIX is a registered trademark of The Institute of Electrical and Electronics Engineers, Incorporated.

IEEE and IEEE 802 are registered trademarks in the U.S. Patent & Trademark Office, owned by The Institute of Electrical and Electronics Engineers, Incorporated.

PDF: ISBN 978-1-5044-8303-2 STD25174

*IEEE prohibits discrimination, harassment and bullying.*

*For more information, visit <https://www.ieee.org/about/corporate/governance/p9-26.html>.*

*No part of this publication may be reproduced in any form, in an electronic retrieval system or otherwise, without the prior written permission of the publisher.*

## Important Notices and Disclaimers Concerning IEEE Standards Documents

IEEE Standards documents are made available for use subject to important notices and legal disclaimers. These notices and disclaimers, or a reference to this page (<https://standards.ieee.org/ipr/disclaimers.html>), appear in all standards and may be found under the heading “Important Notices and Disclaimers Concerning IEEE Standards Documents.”

### Notice and Disclaimer of Liability Concerning the Use of IEEE Standards Documents

IEEE Standards documents are developed within the IEEE Societies and the Standards Coordinating Committees of the IEEE Standards Association (IEEE SA) Standards Board. IEEE develops its standards through an accredited consensus development process, which brings together volunteers representing varied viewpoints and interests to achieve the final product. IEEE Standards are documents developed by volunteers with scientific, academic, and industry-based expertise in technical working groups. Volunteers are not necessarily members of IEEE or IEEE SA, and participate without compensation from IEEE. While IEEE administers the process and establishes rules to promote fairness in the consensus development process, IEEE does not independently evaluate, test, or verify the accuracy of any of the information or the soundness of any judgments contained in its standards.

IEEE makes no warranties or representations concerning its standards, and expressly disclaims all warranties, express or implied, concerning this standard, including but not limited to the warranties of merchantability, fitness for a particular purpose and non-infringement. In addition, IEEE does not warrant or represent that the use of the material contained in its standards is free from patent infringement. IEEE standards documents are supplied “AS IS” and “WITH ALL FAULTS.”

Use of an IEEE standard is wholly voluntary. The existence of an IEEE Standard does not imply that there are no other ways to produce, test, measure, purchase, market, or provide other goods and services related to the scope of the IEEE standard. Furthermore, the viewpoint expressed at the time a standard is approved and issued is subject to change brought about through developments in the state of the art and comments received from users of the standard.

In publishing and making its standards available, IEEE is not suggesting or rendering professional or other services for, or on behalf of, any person or entity, nor is IEEE undertaking to perform any duty owed by any other person or entity to another. Any person utilizing any IEEE Standards document, should rely upon his or her own independent judgment in the exercise of reasonable care in any given circumstances or, as appropriate, seek the advice of a competent professional in determining the appropriateness of a given IEEE standard.

IN NO EVENT SHALL IEEE BE LIABLE FOR ANY DIRECT, INDIRECT, INCIDENTAL, SPECIAL, EXEMPLARY, OR CONSEQUENTIAL DAMAGES (INCLUDING, BUT NOT LIMITED TO: THE NEED TO PROCURE SUBSTITUTE GOODS OR SERVICES; LOSS OF USE, DATA, OR PROFITS; OR BUSINESS INTERRUPTION) HOWEVER CAUSED AND ON ANY THEORY OF LIABILITY, WHETHER IN CONTRACT, STRICT LIABILITY, OR TORT (INCLUDING NEGLIGENCE OR OTHERWISE) ARISING IN ANY WAY OUT OF THE PUBLICATION, USE OF, OR RELIANCE UPON ANY STANDARD, EVEN IF ADVISED OF THE POSSIBILITY OF SUCH DAMAGE AND REGARDLESS OF WHETHER SUCH DAMAGE WAS FORESEEABLE.

## Translations

The IEEE consensus development process involves the review of documents in English only. In the event that an IEEE standard is translated, only the English version published by IEEE should be considered the approved IEEE standard.

## Official statements

A statement, written or oral, that is not processed in accordance with the IEEE SA Standards Board Operations Manual shall not be considered or inferred to be the official position of IEEE or any of its committees and shall not be considered to be, nor be relied upon as, a formal position of IEEE. At lectures, symposia, seminars, or educational courses, an individual presenting information on IEEE standards shall make it clear that the presenter's views should be considered the personal views of that individual rather than the formal position of IEEE, IEEE SA, the Standards Committee, or the Working Group.

## Comments on standards

Comments for revision of IEEE Standards documents are welcome from any interested party, regardless of membership affiliation with IEEE or IEEE SA. However, **IEEE does not provide interpretations, consulting information, or advice pertaining to IEEE Standards documents.**

Suggestions for changes in documents should be in the form of a proposed change of text, together with appropriate supporting comments. Since IEEE standards represent a consensus of concerned interests, it is important that any responses to comments and questions also receive the concurrence of a balance of interests. For this reason, IEEE and the members of its Societies and Standards Coordinating Committees are not able to provide an instant response to comments, or questions except in those cases where the matter has previously been addressed. For the same reason, IEEE does not respond to interpretation requests. Any person who would like to participate in evaluating comments or in revisions to an IEEE standard is welcome to join the relevant IEEE working group. You can indicate interest in a working group using the Interests tab in the Manage Profile & Interests area of the [IEEE SA myProject system](#).<sup>1</sup>

Comments on standards should be submitted using the [Contact Us](#) form.<sup>2</sup>

## Laws and regulations

Users of IEEE Standards documents should consult all applicable laws and regulations. Compliance with the provisions of any IEEE Standards document does not imply compliance to any applicable regulatory requirements. Implementers of the standard are responsible for observing or referring to the applicable regulatory requirements. IEEE does not, by the publication of its standards, intend to urge action that is not in compliance with applicable laws, and these documents may not be construed as doing so.

## Data privacy

Users of IEEE Standards documents should evaluate the standards for considerations of data privacy and data ownership in the context of assessing and using the standards in compliance with applicable laws and regulations.

---

<sup>1</sup> Available at: <https://development.standards.ieee.org/myproject-web/public/view.html#landing>.

<sup>2</sup> Available at: <https://standards.ieee.org/content/ieee-standards/en/about/contact/index.html>.

## Copyrights

IEEE draft and approved standards are copyrighted by IEEE under US and international copyright laws. They are made available by IEEE and are adopted for a wide variety of both public and private uses. These include both use, by reference, in laws and regulations, and use in private self-regulation, standardization, and the promotion of engineering practices and methods. By making these documents available for use and adoption by public authorities and private users, IEEE does not waive any rights in copyright to the documents.

## Photocopies

Subject to payment of the appropriate licensing fees, IEEE will grant users a limited, non-exclusive license to photocopy portions of any individual standard for company or organizational internal use or individual, non-commercial use only. To arrange for payment of licensing fees, please contact Copyright Clearance Center, Customer Service, 222 Rosewood Drive, Danvers, MA 01923 USA; +1 978 750 8400; <https://www.copyright.com/>. Permission to photocopy portions of any individual standard for educational classroom use can also be obtained through the Copyright Clearance Center.

## Updating of IEEE Standards documents

Users of IEEE Standards documents should be aware that these documents may be superseded at any time by the issuance of new editions or may be amended from time to time through the issuance of amendments, corrigenda, or errata. An official IEEE document at any point in time consists of the current edition of the document together with any amendments, corrigenda, or errata then in effect.

Every IEEE standard is subjected to review at least every 10 years. When a document is more than 10 years old and has not undergone a revision process, it is reasonable to conclude that its contents, although still of some value, do not wholly reflect the present state of the art. Users are cautioned to check to determine that they have the latest edition of any IEEE standard.

In order to determine whether a given document is the current edition and whether it has been amended through the issuance of amendments, corrigenda, or errata, visit [IEEE Xplore](#) or [contact IEEE](#).<sup>3</sup> For more information about the IEEE SA or IEEE's standards development process, visit the IEEE SA Website.

## Errata

Errata, if any, for all IEEE standards can be accessed on the [IEEE SA Website](#).<sup>4</sup> Search for standard number and year of approval to access the web page of the published standard. Errata links are located under the Additional Resources Details section. Errata are also available in [IEEE Xplore](#). Users are encouraged to periodically check for errata.

## Patents

IEEE Standards are developed in compliance with the [IEEE SA Patent Policy](#).<sup>5</sup>

Attention is called to the possibility that implementation of this standard may require use of subject matter covered by patent rights. By publication of this standard, no position is taken by the IEEE with respect to the existence or validity of any patent rights in connection therewith. If a patent holder or patent applicant has

<sup>3</sup> Available at: <https://ieeexplore.ieee.org/browse/standards/collection/ieee>.

<sup>4</sup> Available at: <https://standards.ieee.org/standard/index.html>.

<sup>5</sup> Available at: <https://standards.ieee.org/about/sasb/patcom/materials.html>.

filed a statement of assurance via an Accepted Letter of Assurance, then the statement is listed on the IEEE SA Website at <https://standards.ieee.org/about/sasb/patcom/patents.html>. Letters of Assurance may indicate whether the Submitter is willing or unwilling to grant licenses under patent rights without compensation or under reasonable rates, with reasonable terms and conditions that are demonstrably free of any unfair discrimination to applicants desiring to obtain such licenses.



## Participants

At the time this revision was submitted to the IEEE SA Standards Board for approval, the IEEE 802.1 Working Group had the following membership:

**Glenn Parsons, *Chair***  
**Jessy Rouyer, *Vice Chair***  
**Paul Congdon, *Maintenance Task Group Chair***  
**Geoffrey Garner, *Editor***

Astrit Ademaj  
 Ralf Assmann  
 Venkat Arunarthi  
 Rudy Belliardi  
 Christian Boiger  
 Paul Bottorff  
 Radhakrishna Canchi  
 Feng Chen  
 Abhijit Choudhury  
 Paul Congdon  
 Rodney Cummings  
 Josef Dorr  
 Hesham Elbakoury  
 Anna Engelmann  
 Thomas Enzinger  
 János Farkas  
 Donald Fedyk  
 Norman Finn  
 Geoffrey Garner  
 Amrit Gopal  
 Craig Gunther  
 Marina Gutierrez  
 Stephen Haddock  
 Mark Hantel  
 Jerome Henry  
 Marc Holness

Daniel Hopf  
 Woojung Huh  
 Satoko Itaya  
 Yoshihiro Ito  
 Michael Karl  
 Stephan Kehrer  
 Marcel Kiessling  
 Randy Kelsey  
 Gavin Lai  
 James Lawlis  
 Joao Lopes  
 Lily Lv  
 Christophe Mangin  
 Scott Mansfield  
 Kenichi Maruhashi  
 Olaf Mater  
 David McCall  
 Lary McMillan  
 John Messenger  
 Hiroki Nakano  
 Hiroshi Ohue  
 Donald R. Pannell  
 Razvan Petre  
 Michael Potts  
 Dieter Proell  
 Wei Qiu

Karen Randall  
 Maximilian Riegel  
 Silvana Rodrigues  
 Atsushi Sato  
 Frank Schewe  
 Michawl Seaman  
 Malik Seewald  
 Ramesh Sivakolundu  
 Johannes Specht  
 Marius Stanica  
 Guenter Steindl  
 Liyang Sun  
 Karim Traore  
 Max Turner  
 Balazs Varga  
 Ganesh Venkatesan  
 Tongton Wang  
 Xinuyan Wang  
 Karl Weber  
 Leon Wessels  
 Ludwig Winkel  
 Jordan Woods  
 Takahiro Yamaura  
 Yue Yin  
 Uwe Zeier  
 Nader Zein

The following members of the balloting committee voted on this standard. Balloters may have voted for approval, disapproval, or abstention.

|                    |                    |                    |
|--------------------|--------------------|--------------------|
| Greg Armstrong     | Yasuhiko Inoue     | Clinton Powell     |
| Douglas Arnold     | Pranav Jha         | Dieter Proell      |
| Christian Boiger   | Lokesh Kabra       | Alon Regev         |
| Ashley Butterworth | Piotr Karocki      | Denis Reilly       |
| William Byrd       | Stephan Kehrer     | Maximilian Riegel  |
| Paul Cardinal      | Randy Kelsey       | Silvana Rodrigues  |
| Paul Congdon       | Stuart Kerry       | Benjamin Rolfe     |
| Rodney Cummings    | Evgeny Khorov      | Jessy Rouyer       |
| János Farkas       | Yongbum Kim        | Eugene Stoudenmire |
| Donald Fedyk       | Hyeong Ho Lee      | Walter Struppler   |
| Avraham Freedman   | Ting Li            | Max Turner         |
| Geoffrey Garner    | Jonathon McLendon  | John Vergis        |
| Devon Gayle        | Rajesh Murthy      | Lisa Ward          |
| Jalal Gohari       | Satoshi Obara      | Stephen Webb       |
| Craig Gunther      | Glenn Parsons      | Karl Weber         |
| Marek Hajduczenia  | Bansi Patel        | Scott Willy        |
| Marco Hernandez    | Arumugam Paventhan | Yu Yuan            |
| Oliver Holland     |                    | Oren Yuen          |

When the IEEE SA Standards Board approved this standard on 8 December 2021, it had the following membership:

**Gary Hoffman, Chair**  
**Jon Walter Rosdahl, Vice Chair**  
**John D. Kulick, Past Chair**  
**Konstantinos Karachalios, Secretary**

|                       |                 |                 |
|-----------------------|-----------------|-----------------|
| Edward A. Addy        | Howard Li       | Mehmet Ulema    |
| Doug Edwards          | Daozhuang Lin   | Lei Wang        |
| Ramy Ahmed Fathy      | KevinLu         | F. Keith Waters |
| J. Travis Griffith    | Daleep C. Mohla | Karl Weber      |
| Thomas Koshy          | Chenhui Niu     | Sha Wei         |
| Joseph L. Koepfinger* | Damir Novosel   | Howard Wolfman  |
| David J. Law          | Annette Reilly  | Daidi Zhong     |
|                       | Dorothy Stanley |                 |

\*Member Emeritus

## Introduction

|   |
|---|
| <p>This introduction is not part of IEEE Std 802.1AS-2020/Cor 1-2021, IEEE Standard for Local and Metropolitan Area Networks—Timing and Synchronization for Time-Sensitive Applications—Corrigendum 1: Technical and Editorial Corrections.</p> |
|---|

The first edition of IEEE Std 802.1AS was published in 2011. A first corrigendum, IEEE Std 802.1AS-2011/Cor1-2013, provided technical and editorial corrections. A second corrigendum, IEEE Std 802.1AS-2011/Cor2-2015 provided additional technical and editorial corrections.

The second edition, IEEE Std 802.1AS-2020, added support for multiple gPTP domains, Common Mean Link Delay Service, external port configuration, and Fine Timing Measurement for 802.11 transport. Backward compatibility with IEEE Std 802.1AS-2011 was maintained.

This corrigendum, IEEE Std 802.1AS-2020/Cor1-2021, provides technical and editorial corrections.

## Contents

|  |    |
|--|----|
| 5. Conformance.....  | 14 |
| 5.4 PTP Instance requirements and options.....   | 14 |
| 5.5 MAC-specific timing and synchronization methods for full-duplex IEEE 802.3 links .....                           | 14 |
| 10. Media-independent layer specification .....  | 16 |
| 10.2 Time-synchronization state machines.....  | 16 |
| 10.3 Best master clock selection, external port configuration, and announce interval setting<br>state machines ..... | 19 |
| 10.4 State machines related to signaling gPTP capability .....   | 23 |
| 11. Media-dependent layer specification for full-duplex point-to-point links.....                                    | 26 |
| 11.2 State machines for MD entity specific to full-duplex point-to-point links.....                                  | 26 |
| 12. Media-dependent layer specification for IEEE 802.11 links .....  | 29 |
| 12.5 State machines .....  | 29 |
| 16. Media-dependent layer specification for CSN.....   | 30 |
| 16.5 Synchronization messages .....  | 30 |
| Annex A (normative) Protocol Implementation Conformance Statement (PICS) proforma .....                              | 31 |

## Figures

|  |    |
|--|----|
| Figure 10-2 Time-synchronization state machines—overview and interrelationships .....                            | 17 |
| Figure 10-19 AnnounceIntervalSetting state machine .....   | 20 |
| Figure 10-20 SyncIntervalSetting state machine .....   | 22 |
| Figure 10-23 GtpCapableIntervalSetting state machine .....   | 24 |
| Figure 11-4 Detail of MD entity time-synchronization state machines for full-duplex point-to-point<br>links..... | 26 |
| Figure 11-9 MDPdelayReq state machine .....  | 27 |

## Tables

|                          |    |
|--------------------------|----|
| Table 16-1 CSN TLV ..... | 30 |
|--------------------------|----|

# IEEE Standard for Local and metropolitan area networks— Timing and Synchronization for Time-Sensitive Applications

## Corrigendum 1: Technical and Editorial Corrections

[This corrigendum is based on IEEE Std 802.1AS™-2020.]

NOTE—The editing instructions contained in this amendment define how to merge the material contained therein into the existing base standard and its amendments to form the comprehensive standard.

The editing instructions are shown in ***bold italic***. Four editing instructions are used: change, delete, insert, and replace. ***Change*** is used to make corrections in existing text or tables. The editing instruction specifies the location of the change and describes what is being changed by using ~~striketrough~~ (to remove old material) and underscore (to add new material). ***Delete*** removes existing material. ***Insert*** adds new material without disturbing the existing material. Deletions and insertions may require renumbering. If so, renumbering instructions are given in the editing instruction. ***Replace*** is used to make changes in figures or equations by removing the existing figure or equation and replacing it with a new one. Editing instructions, change markings, and this NOTE will not be carried over into future editions because the changes will be incorporated into the base standard.<sup>6</sup>

---

<sup>6</sup>Notes in text, tables, and figures are given for information only, and do not contain requirements needed to implement the standard.

## 5. Conformance

### 5.4 PTP Instance requirements and options

*Change 5.4.1 as follows:*

#### 5.4.1 Summary of requirements

An implementation of a PTP Instance shall:

- a) Implement the generalized precision time protocol (gPTP) requirements specified in Clause 8.
- b) Support the requirements for time-synchronization state machines (10.1.2, 10.2.1, 10.2.2, 10.2.3, 10.2.4, 10.2.5, and 10.2.6).
- c) Support at least one PTP Port.
- d) On each supported PTP Port, implement the PortSyncSyncReceive state machine (10.2.8).
- e) Implement the ClockSlaveSync state machine (10.2.13).
- f) Support the following best master clock algorithm (BMCA) requirements:
  - 1) Implement the BMCA ([10.3.1.1](#), [10.3.1.2](#), 10.3.2, 10.3.3, 10.3.4, 10.3.5, 10.3.6, 10.3.8, and 10.3.10).
  - 2) For domain 0, implement specifications for externalPortConfigurationEnabled value of FALSE (10.3.1).
  - 3) Implement the PortAnnounceReceive state machine (10.3.11).
  - 4) Implement the PortAnnounceInformation state machine (10.3.12).
  - 5) Implement the PortStateSelection state machine (10.3.13).
  - 6) Have the BMCA as the default mode of operation, with externalPortConfiguration FALSE, on domain 0.
  - 7) Implement at least one of the possibilities for externalPortConfigurationEnabled (i.e., FALSE, meaning the BMCA is used, and TRUE, meaning external port configuration is used) on domains other than domain 0.
- g) Implement the SiteSyncSync state machine (10.2.7).
- h) Implement the state machines related to signaling gPTP capability (10.4).
- i) For receipt of all messages and for transmission of all messages except Announce (see 10.6.3) and Signaling (see 10.6.4), support the message requirements as specified in 10.5, 10.6, and 10.7.
- j) Support the performance requirements in B.1 and B.2.4.

*Change 5.5 as follows:*

### 5.5 MAC-specific timing and synchronization methods for full-duplex IEEE 802.3 links

An implementation of a time-aware system with IEEE 802.3 media access control (MAC) services to physical ports shall:

- a) Support full-duplex operation, as specified in 4.2 and Annex 4A of IEEE Std 802.3-2018.
- b) Support the requirements as specified in Clause 11 [\[with the exception of requirements more specifically addressed in this subclause \(5.5\)\]](#).
- c) Implement the SyncIntervalSetting state machine (10.3.18).



IEEE Std 802.1AS-2020/Cor 1-2021  
IEEE Standard for Local and Metropolitan Area Networks—Timing and Synchronization for Time-Sensitive Applications—  
Corrigendum 1: Technical and Editorial Corrections

- d) Provide the Common Mean Link Delay Service (CMLDS) if the time-aware system implements more than one domain, as specified in 11.2.17 and 11.2.18.

An implementation of a PTP Instance with IEEE 802.3 MAC services to physical ports may:

- e) Support asymmetry measurement mode as specified in 10.3.12, 10.3.13, 10.3.16, 11.2.14, 11.2.15, 11.2.19, and 14.8.45.
- f) Support one-step capability on receive as specified in 11.2.14.
- g) Support one-step capability on transmit as specified in 11.2.15.
- h) Support the OneStepTxOperSetting state machine specified in 11.2.16.
- i) Support propagation delay averaging, as specified in 11.2.19.3.4.
- j) Provide the Common Mean Link Delay Service (CMLDS) if the time-aware system implements only one domain, as specified in 11.2.17 and 11.2.18.

## **10. Media-independent layer specification**

### **10.2 Time-synchronization state machines**

#### **10.2.1 Overview**

*Replace Figure 10-2 with the following figure and insert NOTE immediately after Figure 10-2 as shown:*



NOTE—Figure 10-2 differs from the 2020 edition of this standard in that the global variable `syncSequenceId` is removed from the `ClockMasterSyncSend` block.

### 10.2.5 Per-port global variables

*Change 10.2.5.17 as follows:*

**10.2.5.17 syncSlowdown:** A Boolean that is set to TRUE if the `SyncIntervalSetting` state machine (see Figure 10-20 in 10.3.18.3) receives a TLV that requests a larger sync interval (see 10.7.2.3) and FALSE otherwise. When `syncSlowdown` is set to TRUE, the `PortSyncSyncSend` state machine (see Figure 10-8) continues to send time synchronization event messages (see 11.4.3, 12.1, 12.2, and 13.3.1) at the old (i.e., faster) rate until the number of time synchronization event messages equal to `syncReceiptTimeout` (see 10.7.3.1) have been sent, but with the respective time synchronization event message transmission interval field (see 11.4.2.9, 12.7, Figure 12-8, and 13.3.1.2.10) of the time synchronization event message set equal to the new sync interval (i.e., corresponding to the slower rate). After `syncReceiptTimeout` Sync messages have been sent, subsequent time synchronization event messages are sent at the new (i.e., slower) rate and with the respective time synchronization event message transmission interval field of the time synchronization event message set to the new sync interval. When `syncSlowdown` is set to FALSE, the `PortSyncSyncSend` state machine immediately sends time synchronization event messages at the new (i.e., ~~slower~~faster or the same) rate.

NOTE—If a receiver of time synchronization event messages (see 11.4.3, 12.1, 12.2, and 13.3.1) requests a slower rate, the receiver will continue to use the upstream sync interval value, which it obtains from the respective time synchronization event message transmission interval field (see 11.4.2.9, 12.7, Figure 12-8, and 13.3.1.2.10) of the received time synchronization event message, until it receives a time synchronization event message where that value has changed. If, immediately after requesting a slower time synchronization event message rate, up to `syncReceiptTimeout` consecutive time synchronization event messages sent to the receiver are lost, sync receipt timeout could occur if the sender had changed to the slower rate immediately. Delaying the slowing down of the sending rate of time synchronization event messages for `syncReceiptTimeout` messages prevents this timeout from happening.

*Change 10.2.5.19 as follows:*

**10.2.5.19 gPtpCapableMessageSlowdown:** A Boolean that is set to TRUE if the `GtpCapableIntervalSetting` state machine (see Figure 10-19 in 10.3.17.3) receives a TLV that requests a larger gPTP-capable message interval (see 10.7.2.5) and FALSE otherwise. When `gPtpCapableMessageSlowdown` is set to TRUE, the `GtpCapableTransmit` state machine (see Figure 10-21 in 10.4.1.3) continues to send Signaling messages containing the gPTP-capable TLV at the old (i.e., faster) rate until a number of Signaling messages containing the gPTP-capable TLV, equal to `gPtpCapableReceiptTimeout` (see 10.7.3.3), have been sent, but with the `logGtpCapableMessageInterval` field of the gPTP-capable TLV (see 10.6.4.5.6) set equal to the new gPTP-capable message interval (i.e., corresponding to the slower rate). After `gPtpCapableReceiptTimeout` Signaling messages containing the gPTP-capable TLV have been sent, subsequent such Signaling messages are sent at the new (i.e., slower) rate and with the `logGtpCapableMessageInterval` field of the gPTP-capable TLV set to the new gPTP-capable message interval. When `gPtpCapableSlowdown` is set to FALSE, the `GtpCapableTransmit` state machine immediately sends Signaling messages containing the gPTP-capable TLV at the new (i.e., ~~slower~~faster or the same) rate.

NOTE—If a receiver of Signaling messages containing the gPTP-capable TLV requests a slower rate, the receiver will continue to use the old gPTP-capable message interval value in determining, via the `GtpCapableReceive` state machine (see 10.4.2), if its neighbor is no longer capable of invoking gPTP, until it has received `gPtpCapableReceiptTimeout` such Signaling messages. If, immediately after requesting a slower rate, up to `gPtpCapableReceiptTimeout` consecutive Signaling messages, containing the gPTP-capable TLV, sent to the receiver are lost, a declaration that the sender is no longer capable of invoking gPTP could occur if the sender had changed to the slower rate immediately. Delaying the slowing down of the sending rate of Signaling messages containing the gPTP-capable TLV for `gPtpCapableReceiptTimeout` messages prevents this timeout from happening.

### 10.3 Best master clock selection, external port configuration, and announce interval setting state machines

#### 10.3.10 Per-port global variables

*Change 10.3.10.2 as follows:*

**10.3.10.2 announceSlowdown:** A Boolean that is set to TRUE if the AnnounceIntervalSetting state machine (see Figure 10-19 in item 10.3.17.3) receives a TLV that requests a larger Announce message transmission interval (see 10.7.2.2) and FALSE otherwise. When announceSlowdown is set to TRUE, the PortAnnounceTransmit state machine (see Figure 10-18) continues to send Announce messages at the old (i.e., faster) rate until a number of Announce messages equal to announceReceiptTimeout (see 10.7.3.2) have been sent, but with the logMessageInterval field of the PTP common header set equal to the new announce interval (i.e., corresponding to the slower rate). After announceReceiptTimeout Announce messages have been sent, subsequent Announce messages are sent at the new (i.e., slower) rate and with the logMessageInterval field of the PTP common header set to the new announce interval. This variable is used by both the BMCA and the explicit port state configuration option. When announceSlowdown is set to FALSE, the PortAnnounceTransmit state machine immediately sends Announce messages at the new (i.e., ~~slower~~faster or the same) rate.

NOTE—If a receiver of Announce messages requests a slower rate, the receiver will continue to use the upstream announceInterval value, which it obtains from the logMessageInterval field of received Announce messages, until it receives an Announce message where that value has changed. If, immediately after requesting a slower Announce message rate, up to announceReceiptTimeout minus one consecutive Announce messages sent to the receiver are lost, announce receipt timeout could occur if the sender had changed to the slower rate immediately. Delaying the slowing down of the sending rate of Announce messages for announceReceiptTimeout messages prevents announce receipt timeout from occurring until at least announceReceiptTimeout Announce messages have been lost. Note that networks with high packet loss can still experience announce receipt timeout under high-packet-loss conditions; however, the announce receipt timeout condition occurs only after at least announceReceiptTimeout Announce messages have been lost.

#### 10.3.17 AnnounceIntervalSetting state machine

##### 10.3.17.3 State diagram

*Replace Figure 10-19 with the following figure and insert the NOTE immediately after Figure 10-19 as shown:*

IEEE Std 802.1AS-2020/Cor 1-2021  
IEEE Standard for Local and Metropolitan Area Networks—Timing and Synchronization for Time-Sensitive Applications—  
Corrigendum 1: Technical and Editorial Corrections

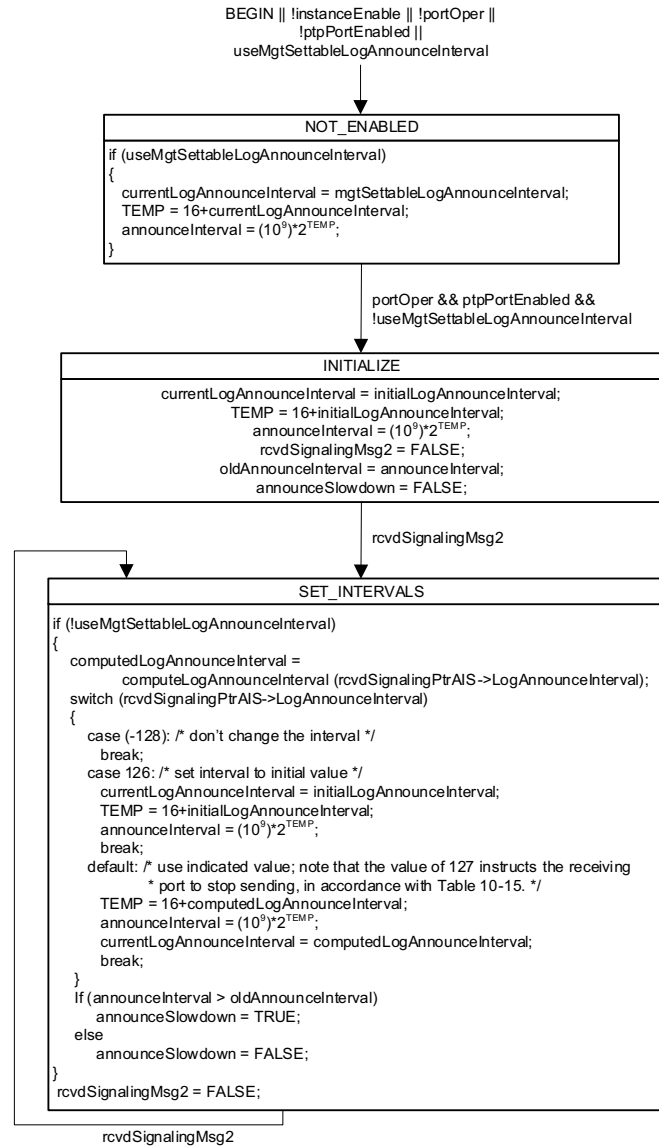


Figure 10-19—AnnounceIntervalSetting state machine

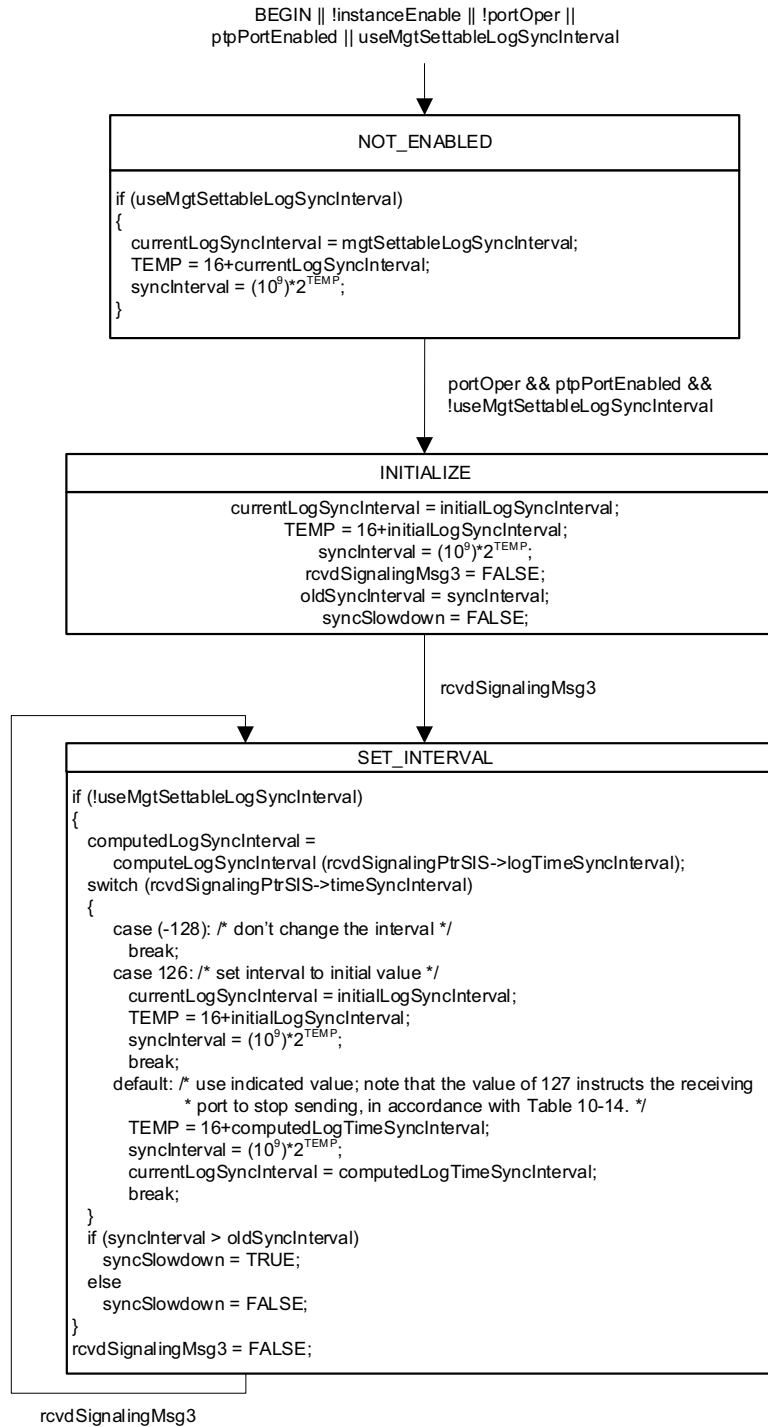
NOTE—Figure 10-19 differs from the 2020 edition of this standard in that the condition for setting announceSlowdown to TRUE is changed from “announceInterval < oldAnnounceInterval” to “announceInterval > oldAnnounceInterval.”

IEEE Std 802.1AS-2020/Cor 1-2021  
IEEE Standard for Local and Metropolitan Area Networks—Timing and Synchronization for Time-Sensitive Applications—  
Corrigendum 1: Technical and Editorial Corrections

### **10.3.18 SyncIntervalSetting state machine**

#### **10.3.18.3 State diagram**

*Replace Figure 10-20 with the following figure and insert the NOTE immediately after Figure 10-20 as shown:*



**Figure 10-20—SyncIntervalSetting state machine**



IEEE Std 802.1AS-2020/Cor 1-2021  
IEEE Standard for Local and Metropolitan Area Networks—Timing and Synchronization for Time-Sensitive Applications—  
Corrigendum 1: Technical and Editorial Corrections

NOTE—Figure 10-20 differs from the 2020 edition of this standard in that the condition for setting syncSlowdown to TRUE is changed from “syncInterval < oldSyncInterval” to “syncInterval > oldSyncInterval.”

## **10.4 State machines related to signaling gPTP capability**

### **10.4.3 GptpCapableIntervalSetting state machine**

#### **10.4.3.3 State diagram**

*Replace Figure 10-23 with the following figure and insert the NOTE immediately after Figure 10-23 as shown:*

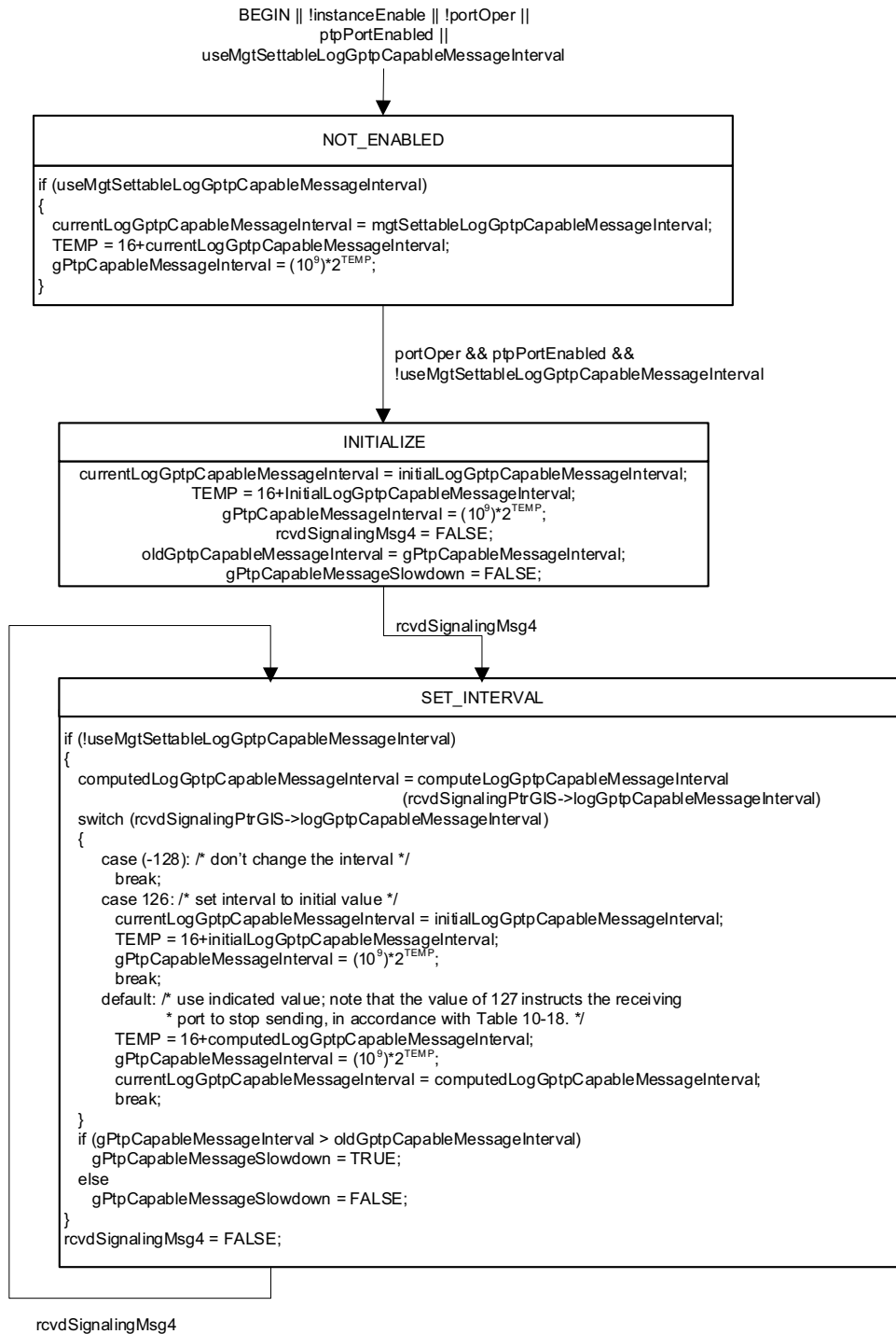


Figure 10-23—GtpCapableIntervalSetting state machine

IEEE Std 802.1AS-2020/Cor 1-2021  
IEEE Standard for Local and Metropolitan Area Networks—Timing and Synchronization for Time-Sensitive Applications—  
Corrigendum 1: Technical and Editorial Corrections

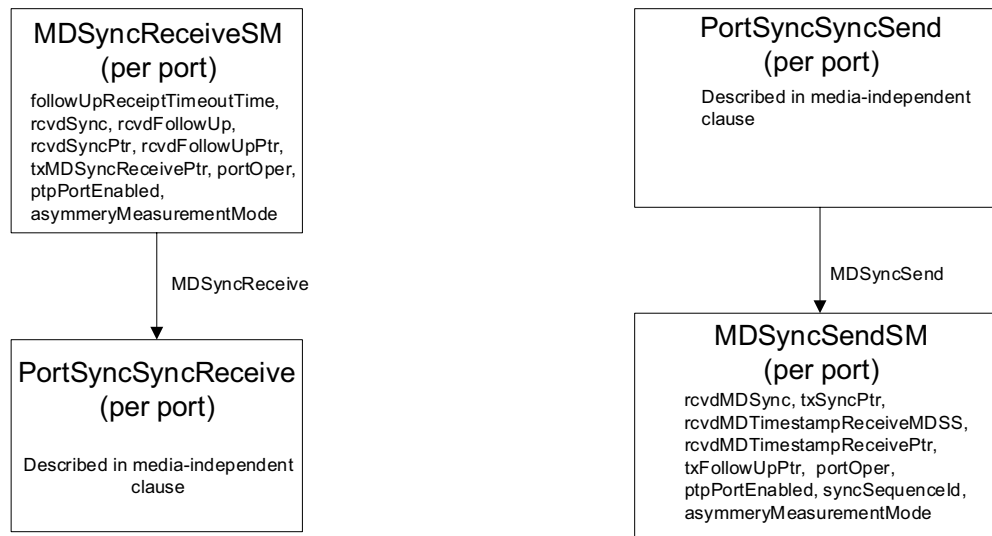
NOTE—Figure 10-23 differs from the 2020 edition of this standard in that the condition for setting `gPtpCapableMessageSlowdown` to `TRUE` is changed from “`gPtpCapableMessageInterval < oldGtpCapableMessageInterval`” to “`gPtpCapableMessageInterval > oldGtpCapableMessageInterval`.”

## 11. Media-dependent layer specification for full-duplex point-to-point links

### 11.2 State machines for MD entity specific to full-duplex point-to-point links

#### 11.2.1 General

*Replace Figure 11-4 with the following figure and insert the NOTE immediately after Figure 11-4 as shown:*



**Figure 11-4—Detail of MD entity time-synchronization state machines for full-duplex point-to-point links**

NOTE—Figure 11-4 differs from the 2020 edition of this standard in that the global variable syncSequenceId is added to the MDSyncSendSM block.

#### 11.2.19 MDPdelayReq state machine

##### 11.2.19.4 State diagram

*Replace Figure 11-9 with the following figure and insert the NOTE immediately after Figure 11-9 as shown:*

IEEE Std 802.1AS-2020  
IEEE Standard for Local and Metropolitan Area Networks—Timing and Synchronization for Time-Sensitive Applications

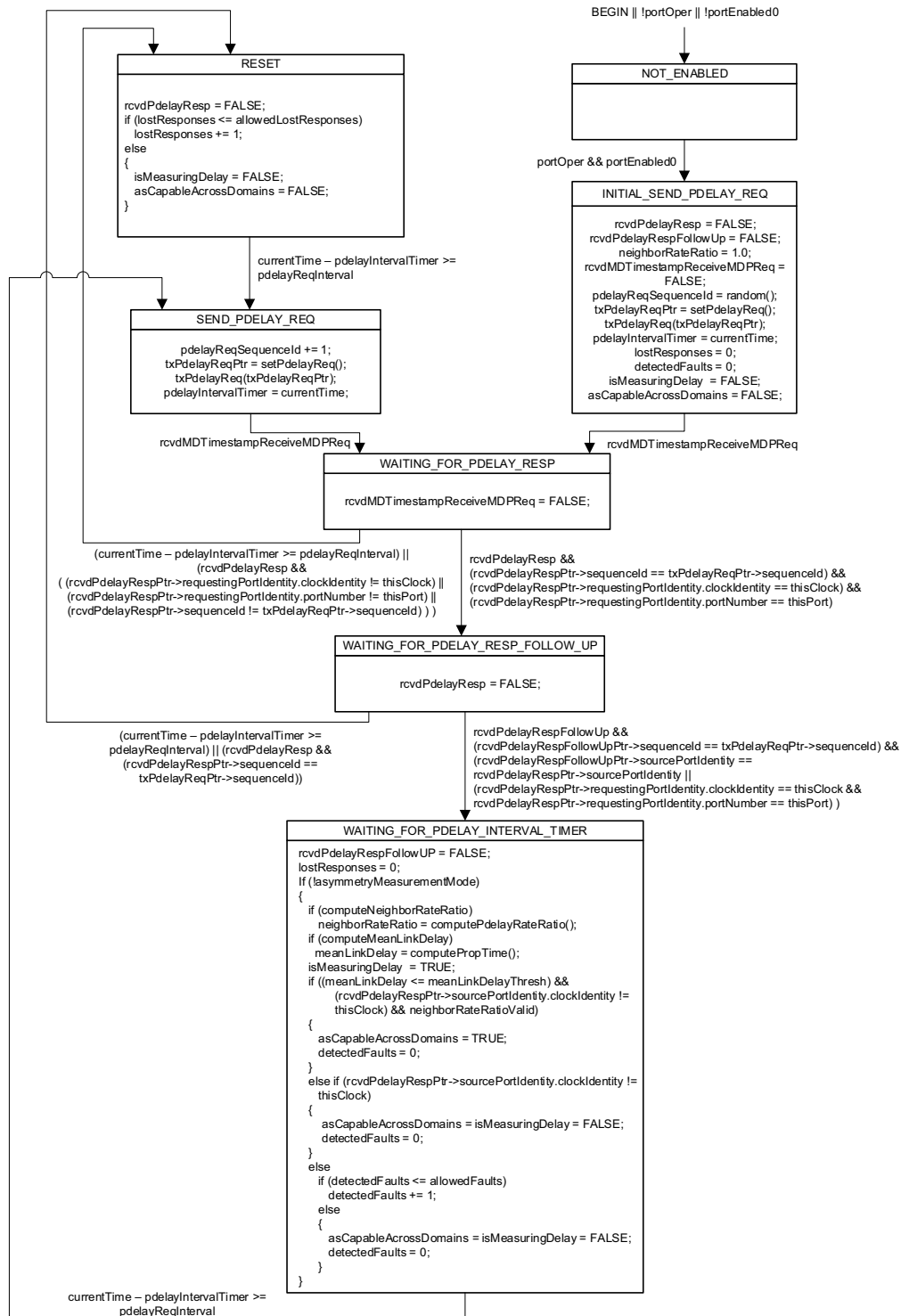


Figure 11-9—MDPdelayReq state machine

IEEE Std 802.1AS-2020  
IEEE Standard for Local and Metropolitan Area Networks—Timing and Synchronization for Time-Sensitive Applications

NOTE—Figure 11-9 differs from the 2020 edition of this standard in that a close curly brace is added on a new line just after the final line of the existing text in the WAITING\_FOR\_PDELAY\_INTERVAL\_TIMER state of the MDPdelayReq state machine.

IEEE Std 802.1AS-2020/Cor 1-2021  
IEEE Standard for Local and Metropolitan Area Networks—Timing and Synchronization for Time-Sensitive Applications—  
Corrigendum 1: Technical and Editorial Corrections

## 12. Media-dependent layer specification for IEEE 802.11 links

### 12.5 State machines

#### 12.5.1 Media-dependent master state machines

*Change 12.5.1.2 as follows:*

##### 12.5.1.2 State diagrams

NOTE—In the computation of the burstDuration in master state machine B, the burst duration parameter from IEEE Std 802.11-2016 is converted to UScaledNs (i.e., units of  $2^{-16}$  ns; see 6.3.3.2.6.4.3.2 of IEEE Std 802.11-2016). The burst duration in UScaledNs (see 6.4.3.2) is related to the quantity  $A = \text{initReqParamsDot11MasterB.burstDuration} - 2$  by:

$$\text{burst duration in UScaledNs} = 1000 \cdot (2^{16}) \cdot 250 \cdot 2^A$$

i.e.,  $A$  is the logarithm to base 2 of the burst duration, in microseconds, divided by 250. Also, it is assumed that the burst duration starts when the initial FTM request is received. In actuality, the timer begins by the partial TSF timer value indicated in the initial FTM frame, which is slightly after the initial FTM request is received.

## 16. Media-dependent layer specification for CSN

### 16.5 Synchronization messages

#### 16.5.3 Synchronization message propagation on a CSN with network reference clock

##### 16.5.3.2 CSN ingress node

##### 16.5.3.2.2 CSN TLV

##### 16.5.3.2.2.1 General

Replace Table 16-1 with the following table:

| Table 16-1—CSN TLV  |   |   |   |   |   |   |   | Octets | Offset<br>from<br>start<br>of TLV |
|---------------------|---|---|---|---|---|---|---|--------|-----------------------------------|
| 7                   | 6 | 5 | 4 | 3 | 2 | 1 | 0 |        |                                   |
| tlvType             |   |   |   |   |   |   |   | 2      | 0                                 |
| lengthField         |   |   |   |   |   |   |   | 2      | 2                                 |
| organizationId      |   |   |   |   |   |   |   | 3      | 4                                 |
| organizationSubType |   |   |   |   |   |   |   | 3      | 7                                 |
| upstreamTxTime      |   |   |   |   |   |   |   | 12     | 10                                |
| neighborRateRatio   |   |   |   |   |   |   |   | 4      | 22                                |
| meanLinkDelay       |   |   |   |   |   |   |   | 12     | 26                                |
| delayAsymmetry      |   |   |   |   |   |   |   | 12     | 38                                |
| domainNumber        |   |   |   |   |   |   |   | 1      | 50                                |



IEEE Std 802.1AS-2020/Cor 1-2021  
 IEEE Standard for Local and Metropolitan Area Networks—Timing and Synchronization for Time-Sensitive Applications—  
 Corrigendum 1: Technical and Editorial Corrections

## Annex A

(normative)

### Protocol Implementation Conformance Statement (PICS) proforma<sup>7</sup>

*Change A.7 as follows:*

#### A.7 Minimal time-aware system

| Item     | Feature   | Status | References  | Support |
|----------|---|--------|---|---------|
| MINTA-16 | For receive of all messages and for transmit of all messages except Announce and Signaling, does the PTP Instance support the message requirements? | M      | item i) of <del>5.4.5</del><br><u>4.1</u> , 10.5, 10.6,<br>10.7 | Yes [ ] |

*Insert rows at the bottom of the table in A.13 as follows:*

#### A.13 Media-dependent, full-duplex point-to-point link

| Item             | Feature  | Status          | References       | Support                      |
|------------------|--|-----------------|------------------|------------------------------|
| <u>MDFDPP-36</u> | <u>If the time-aware system implements more than one domain, does the time-aware system provide CMLDS?</u> | <u>MDFDPP:M</u> | <u>11.2.17.1</u> | <u>Yes [ ]</u>               |
| <u>MDFDPP-37</u> | <u>If the time-aware system implements only one domain, does the time-aware system provide CMLDS?</u>      | <u>MDFDPP:O</u> | <u>11.2.17.2</u> | <u>Yes [ ]</u> <u>No [ ]</u> |

<sup>7</sup> Copyright release for PICS proformas: Users of this standard may freely reproduce the PICS proforma in this annex so that it can be used for its intended purpose and may further publish the completed PICS.