

EUROPEAN STANDARD

**EN 1994-2:2005/AC**

NORME EUROPÉENNE

July 2008

EUROPÄISCHE NORM

Juillet 2008

Juli 2008

---

ICS 91.010.30; 91.080.10; 91.080.40; 93.040

English version  
Version Française  
Deutsche Fassung

Eurocode 4 - Design of composite steel and concrete structures - Part 2:  
General rules and rules for bridges

Eurocode 4 - Calcul des structures mixtes  
acier-béton - Partie 2: Règles générales et  
règles pour les ponts

Eurocode 4 - Bemessung und Konstruktion  
von Verbundtragwerken aus Stahl und  
Beton - Teil 2: Allgemeine  
Bemessungsregeln und Anwendungsregeln  
für Brücken

This corrigendum becomes effective on 30 July 2008 for incorporation in the three official language versions of the EN.

Ce corrigendum prendra effet le 30 juillet 2008 pour incorporation dans les trois versions linguistiques officielles de la EN.

Die Berichtigung tritt am 30. Juli 2008 zur Einarbeitung in die drei offiziellen Sprachfassungen der EN in Kraft.



EUROPEAN COMMITTEE FOR STANDARDIZATION  
COMITÉ EUROPÉEN DE NORMALISATION  
EUROPÄISCHES KOMITEE FÜR NORMUNG

**Management Centre: rue de Stassart, 36 B-1050 Brussels**

---

© 2008 CEN All rights of exploitation in any form and by any means reserved worldwide for CEN national Members.  
Tous droits d'exploitation sous quelque forme et de quelque manière que ce soit réservés dans le monde entier aux membres nationaux du CEN.  
Alle Rechte der Verwertung, gleich in welcher Form und in welchem Verfahren, sind weltweit den nationalen Mitgliedern von CEN vorbehalten.

Ref. No.: EN 1994-2:2005/AC:2008 D/E/F

Page 10

**National Annex for EN 1994-2**

Delete "2.4.1.2 (5)" and replace with "2.4.1.2 (5)P".

Delete "2.4.1.2 (6)" and replace with "2.4.1.2 (6)P".

---

Pages 12 and 13

**1.2.2**

Delete the following:

"EN 1993-1-3<sup>1</sup>", "EN 1993-1-5<sup>1</sup>", "EN 1993-1-11<sup>1</sup>"

and replace with:

"EN 1993-1-3:2006", "EN 1993-1-5:2006", "EN 1993-1-11:2006".

Delete footnote to text at bottom of page: "1 To be published".

**1.2.3**

Delete the following:

"EN 1990: Annex 2<sup>1</sup>", "EN 1992-2<sup>1</sup>" and "EN 1993-2"

and replace with:

"EN 1990:2002, Annex A2", "EN 1992-2:2005" and "EN 1993-2:2006".

---

Page 29

**5.4.2.2 (2)**

Definition of  $\psi_L$  – insert "should" between "which" and "be".

---

Page 41

**6.2.2.4 (3)** Delete existing text and replace with the following:

"For cross-sections in Classes 3 and 4, EN 1993-1-5:2006, 7.1 is applicable using as  $M_{Ed}$  the total bending moment in the considered cross section and both  $M_{pl,Rd}$  and  $M_{t,Rd}$  for the composite cross section."

---

Page 42

**6.2.2.5 (3)** In the NOTE delete the fourth sentence and replace with:

"Also where the stress  $\sigma_{cp}$  is tensile (that is,  $\sigma_{cp} < 0$ ) and  $\sigma_{cp} > \sigma_{cp,0}$ , then  $\sigma_{cp}$  should be replaced by  $\sigma_{cp,0}$  in Equations (6.2a) and (6.2b) of EN 1992-1-1:2004, 6.2.2, with the recommended value  $\sigma_{cp,0} = -1,85 \text{ N/mm}^2$ ".

---

Page 55

**6.6.5.5 (2)** Delete “a lower class” and replace with “Class 3 or Class 4”.

---

Page 68

**6.7.4.2 (6)**

Delete comma “,” in Expression (6.48).

---

Page 74

**6.8.5.4 (2)** Delete “ $\sigma_{s,min}$ ” and replace with “ $\sigma_{s,min,f}$ ”.

---

Page 80

**7.2.2 (2)** Delete “EN 1991-1-1: 2002” and replace with: “EN 1992-1-1:2004”.

**7.3.2 (1)** Delete line between “and” and “EN 1993-2”.

---

Page 88

**9.4 (5)** in line 6 delete: “a web in the bottom concrete flange”  
and replace with: “a web to the bottom concrete flange”.

---

Delete existing Figure C.1 and its title and replace with the following: "

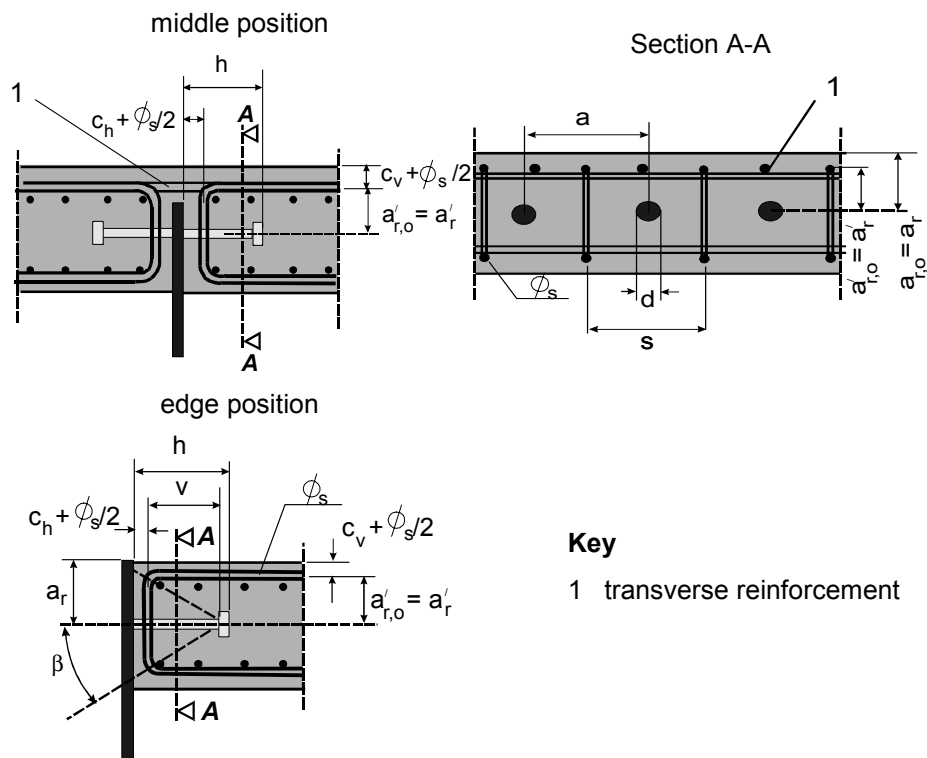


Figure C.1 - Position and geometrical parameters of shear connections with horizontally arranged studs