



# TECHNICAL REPORT ISO/TR 29901:2007 TECHNICAL CORRIGENDUM 1

Published 2009-07-15

INTERNATIONAL ORGANIZATION FOR STANDARDIZATION • МЕЖДУНАРОДНАЯ ОРГАНИЗАЦИЯ ПО СТАНДАРТИЗАЦИИ • ORGANISATION INTERNATIONALE DE NORMALISATION

## Selected illustrations of full factorial experiments with four factors

### TECHNICAL CORRIGENDUM 1

*Illustrations choisies de plans d'expérience factoriels complets à quatre facteurs*

*RECTIFICATIF TECHNIQUE 1*

Technical Corrigendum 1 to ISO/TR 29901:2007 was prepared by Technical Committee ISO/TC 69, *Applications of statistical methods*, Subcommittee SC 7, *Applications of statistical and related techniques for the implementation of Six Sigma*.

---

*Page 21, Figure B.1*

Replace Figure B.1 by the following figure. (In this new figure, “ $B \leq D$ ” and “ $A \geq C$ ” have been replaced by “ $B \cdot D$ ” and “ $A \cdot C$ ”, respectively.)

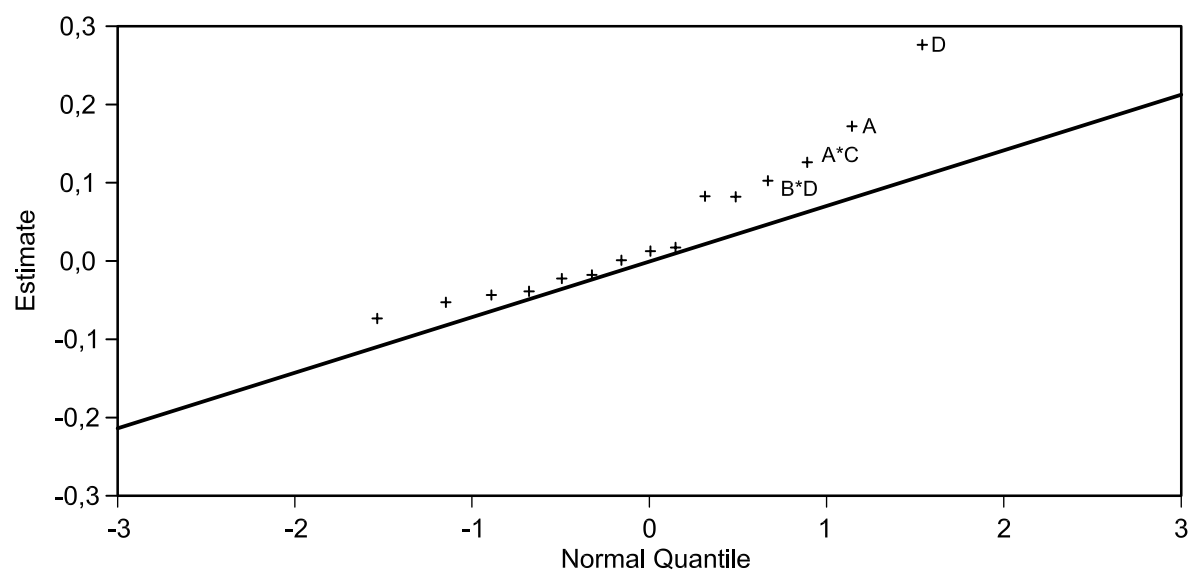


Figure B.1 — Probability plot

Page 22, Figure B.2

Replace Figure B.2 by the following. (In this new figure, the “±” signs have been replaced by “\*” signs.)

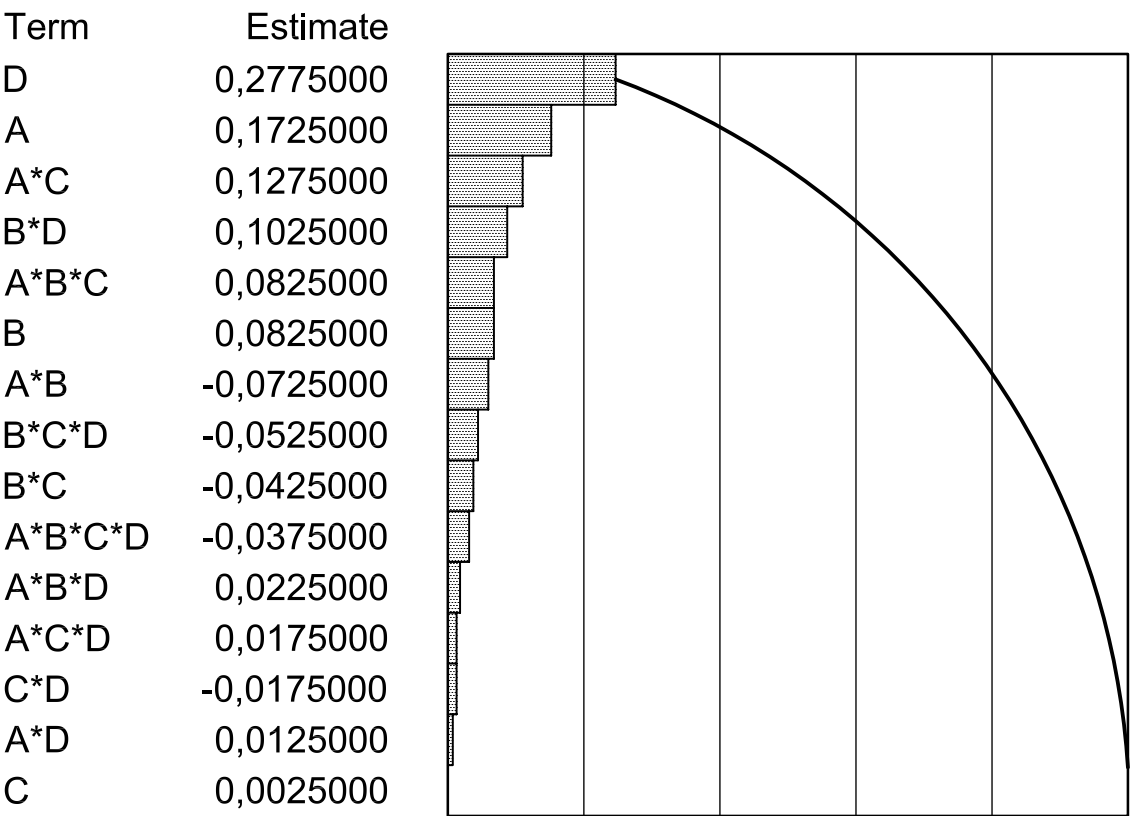


Figure B.2 — Pareto chart of estimates

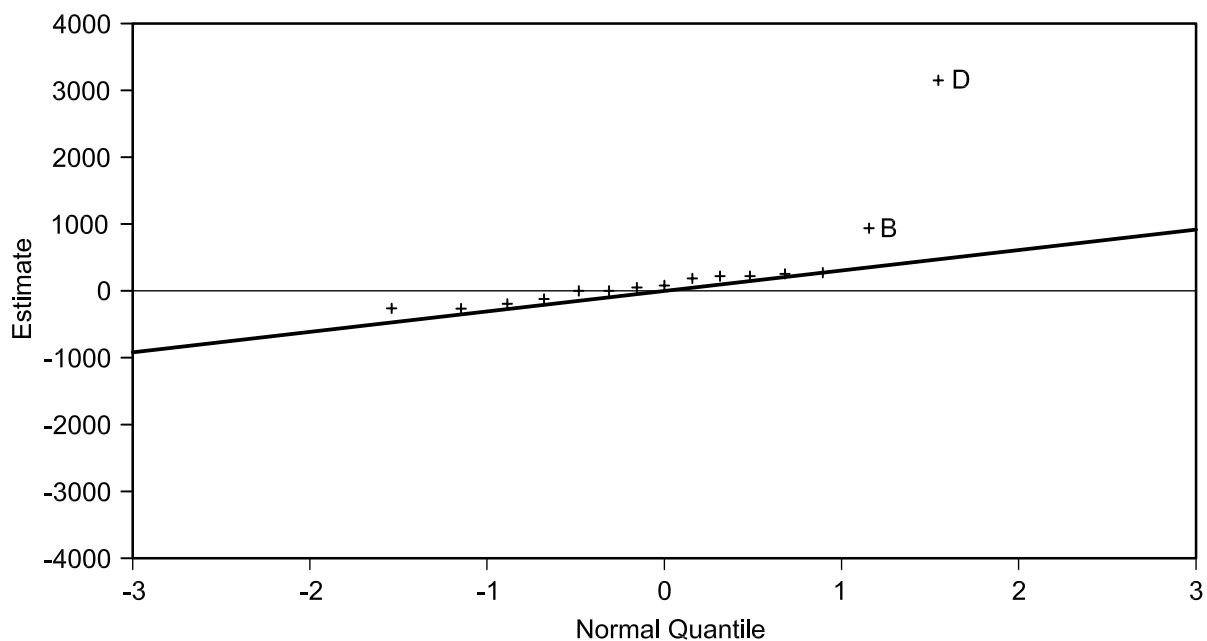
Page 40, D.7.3

Replace “unsignificant” by “non-significant” in the first line to give:

The model was reduced to a final form by removing non-significant terms.

Page 49, Figure E.2

Replace Figure E.2 by the following. (The labelling of point A has been changed to point B.)



The slanted line is the Lenth's pseudo standard error (PSE), from the estimates population.

The horizontal line is the root mean squared error (RMSE), from the residual.

**Figure E.2 — Normal plot**

Replace Figure E.3 by the following. (In this new figure, the “±” signs have been replaced by “\*” signs.)

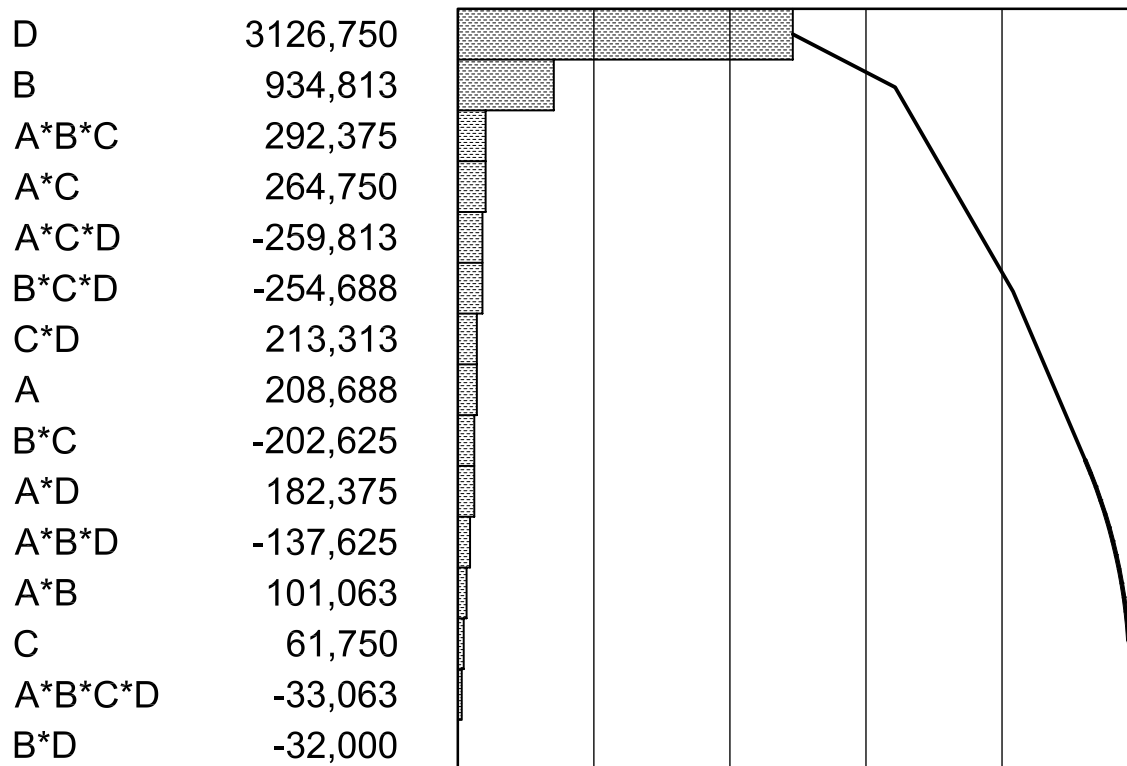


Figure E.3 — Pareto chart of effects