

**JÄTKUSUUTLIK ARENG KOGUKONDADES**

**Säästva arengu juhtimissüsteem**

**Nõuded kasutamiseks**

**Sustainable development in communities**

**Management system for sustainable development**

**Requirements with guidance for use**

**(ISO 37101:2016, identical)**

**EESTI STANDARDI EESSÕNA****NATIONAL FOREWORD**

See Eesti standard EVS-ISO 37101:2019 „Jätkusuutlik areng kogukondades. Säästva arengu juhtimissüsteem. Nõuded kasutamiseks“ sisaldab rahvusvahelise standardi ISO 37101:2016 „Sustainable development in communities. Management system for sustainable development. Requirements with guidance for use“ identset ingliskeelset teksti.	This Estonian Standard EVS-ISO 37101:2019 consists of the identical English text of the International Standard ISO 37101:2016 „Sustainable development in communities. Management system for sustainable development. Requirements with guidance for use“.
Ettepaneku rahvusvahelise standardi ümbertrüki meetodil ülevõtuks on esitanud EVS/TK 33, standardi avaldamist on korraldanud Eesti Standardikeskus.	Proposal to adopt the International Standard by reprint method has been presented by EVS/TK 33, the Estonian Standard has been published by the Estonian Centre for Standardisation.
Standard EVS-ISO 37101:2019 on jõustunud sellekohase teate avaldamisega EVS Teataja 2019. aasta septembrikuu numbris.	Standard EVS-ISO 37101:2019 has been endorsed with a notification published in the September 2019 issue of the official bulletin of the Estonian Centre for Standardisation.
Standard on kättesaadav Eesti Standardikeskusest.	The standard is available from the Estonian Centre for Standardisation.

**Käsitlusala**

See rahvusvaheline standard seab sisse nõuded kogukondade, sealhulgas linnade säästva arengu juhtimissüsteemile, kasutades terviklikku lähenemisviisi, et tagada kooskõla kogukondade säästva arengu juhtpõhimõtetega.

**MÄRKUS 1** Linnad on viimase sajandi jooksul muutunud kohaliku, riikliku ja rahvusvahelise tasandi säästva arengu olulisteks osapoolteks enneolematu linnastumise surve tõttu.

Kogukondade säästva arengu juhtimissüsteemi kavandatud väljundid on järgmised:

- jätkusuutlikkuse juhtimine ning arukuse ja vastupidavuse edendamine kogukondades, võttes arvesse territoriaalseid piire, mille suhtes seda kohaldatakse;
- kogukondade säästva arengu tulemustesse panustamise parendamine;
- kogukondade tulemuslikkuse hindamine säästva arengu tulemuste ning nende saavutatud arukuse ja vastupidavuse taseme asjus;
- vastavuskohustuste täitmine.

**MÄRKUS 2** Arukus ja vastupidavus on lõimitud säästva arengu protsessi: säästev areng on kõikehõlmav protsess, samas kui arukus ja vastupidavus on omadused.

Selle rahvusvahelise standardi eesmärk on aidata kogukondadel muutuda strateegiate, programmide, projektide, plaanide ja teenuste elluviimisel paindlikumaks, arukamaks ja jätkusuutlikumaks ning demonstreerida ja edastada oma saavutusi.

See rahvusvaheline standard on mõeldud elluviimiseks kogukonna määratud organisatsioonile, et luua organisatsiooniline raamistik ja pakkuda ressursse, mis on vajalikud keskkonna-, majandus- ja sotsiaalse tulemuslikkuse juhtimise toetamiseks. Kogukonda, kes otsustab organisatsiooni raamistiku ise luua, loetakse selles rahvusvahelises standardis organisatsiooniks.

See rahvusvaheline standard on kohaldatav igale kogukonnale, olenemata nende suurusest, ülesehitusest ja tüübist, nii arenenud riikides kui ka arengumaades kohalikul, piirkondlikul või riiklikul tasandil ning kindlaksmääratud linna- või maapiirkondades nende vastutuse tasemel.

Seda rahvusvahelist standardit saab täielikult või osaliselt kasutada kogukondade säästva arengu juhtimise parendamiseks. Väited selle rahvusvahelise standardi nõuetele vastavuse kohta ei ole siiski vastuvõetavad, välja arvatud juhul, kui kõik selle nõuded on lõimitud organisatsiooni juhtimissüsteemiga kogukonna säästva arengu saavutamiseks ja on täidetud ilma välistamiseta.

Tagasisidet standardi sisu kohta on võimalik edastada, kasutades EVS-i veebilehel asuvat tagasiside vormi või saates e-kirja meiliaadressile [standardiosakond@evs.ee](mailto:standardiosakond@evs.ee).

ICS 13.020.20

**Standardite reprodutseerimise ja levitamise õigus kuulub Eesti Standardikeskusele**

Andmete paljundamine, taastekitamine, kopeerimine, salvestamine elektroonsesse süsteemi või edastamine ükskõik millises vormis või millisel teel ilma Eesti Standardikeskuse kirjaliku loata on keelatud.

Kui Teil on küsimusi standardite autorikaitse kohta, võtke palun ühendust Eesti Standardikeskusega:  
Koduleht [www.evs.ee](http://www.evs.ee); telefon 605 5050; e-post [info@evs.ee](mailto:info@evs.ee)

**The right to reproduce and distribute standards belongs to the Estonian Centre for Standardisation**

No part of this publication may be reproduced or utilized in any form or by any means, electronic or mechanical, including photocopying, without a written permission from the Estonian Centre for Standardisation.

If you have any questions about copyright, please contact the Estonian Centre for Standardisation:  
Homepage [www.evs.ee](http://www.evs.ee); phone +372 605 5050; e-mail [info@evs.ee](mailto:info@evs.ee)

# Contents

	Page
<b>Foreword</b>	<b>v</b>
<b>Introduction</b>	<b>vi</b>
<b>1 Scope</b>	<b>1</b>
<b>2 Normative references</b>	<b>1</b>
<b>3 Terms and definitions</b>	<b>1</b>
<b>4 Context of the organization</b>	<b>7</b>
4.1 Understanding the organization and its context	7
4.2 Understanding the needs and expectations of interested parties	7
4.3 Determining the scope of the management system for sustainable development in communities	7
4.4 Management system for sustainable development in communities	8
4.5 Purposes of sustainability	8
4.6 Sustainability issues	8
4.6.1 General	8
4.6.2 Governance, empowerment and engagement	9
4.6.3 Education and capacity building	10
4.6.4 Innovation, creativity and research	10
4.6.5 Health and care in the community	10
4.6.6 Culture and community identity	11
4.6.7 Living together, interdependence and mutuality	11
4.6.8 Economy and sustainable production and consumption	12
4.6.9 Living and working environment	12
4.6.10 Safety and security	13
4.6.11 Community infrastructures	13
4.6.12 Mobility	14
4.6.13 Biodiversity and ecosystem services	14
<b>5 Leadership</b>	<b>15</b>
5.1 Leadership and commitment	15
5.2 Policy	15
5.3 Organizational roles, responsibilities and authorities	16
5.4 Responsibility for identification of community sustainability issues	16
<b>6 Planning</b>	<b>16</b>
6.1 Actions to address risks and opportunities	16
6.1.1 General	16
6.1.2 Baseline review	17
6.1.3 Compliance obligations	18
6.1.4 Determining the significance of sustainability issues	18
6.1.5 Identifying and engaging interested parties	18
6.2 Objectives of sustainable development in communities and planning to achieve them	19
6.2.1 General	19
6.2.2 Strategy for sustainable development	19
<b>7 Support</b>	<b>19</b>
7.1 Resources	19
7.2 Competence	20
7.3 Awareness	20
7.4 Communication	20
7.5 Documented information	20
7.5.1 General	20
7.5.2 Creating and updating	21
7.5.3 Control of documented information	21
<b>8 Operation</b>	<b>21</b>

8.1	Operational planning and control .....	21
8.2	Ensuring coherence of strategies, programmes, projects, plans and services.....	22
<b>9</b>	<b>Performance evaluation .....</b>	<b>22</b>
9.1	Monitoring, measurement, analysis and evaluation.....	22
9.2	Internal audit.....	23
9.3	Management review.....	24
<b>10</b>	<b>Improvement.....</b>	<b>24</b>
10.1	Nonconformity and corrective action.....	24
10.2	Continual improvement.....	25
<b>Annex A (informative) Maturity matrix.....</b>		<b>26</b>
<b>Annex B (informative) Mapping of issues, indicators and metrics .....</b>		<b>29</b>
<b>Bibliography .....</b>		<b>31</b>

## Foreword

ISO (the International Organization for Standardization) is a worldwide federation of national standards bodies (ISO member bodies). The work of preparing International Standards is normally carried out through ISO technical committees. Each member body interested in a subject for which a technical committee has been established has the right to be represented on that committee. International organizations, governmental and non-governmental, in liaison with ISO, also take part in the work. ISO collaborates closely with the International Electrotechnical Commission (IEC) on all matters of electrotechnical standardization.

The procedures used to develop this document and those intended for its further maintenance are described in the ISO/IEC Directives, Part 1. In particular the different approval criteria needed for the different types of ISO documents should be noted. This document was drafted in accordance with the editorial rules of the ISO/IEC Directives, Part 2 (see [www.iso.org/directives](http://www.iso.org/directives)).

Attention is drawn to the possibility that some of the elements of this document may be the subject of patent rights. ISO shall not be held responsible for identifying any or all such patent rights. Details of any patent rights identified during the development of the document will be in the Introduction and/or on the ISO list of patent declarations received (see [www.iso.org/patents](http://www.iso.org/patents)).

Any trade name used in this document is information given for the convenience of users and does not constitute an endorsement.

For an explanation on the meaning of ISO specific terms and expressions related to conformity assessment, as well as information about ISO's adherence to the World Trade Organization (WTO) principles in the Technical Barriers to Trade (TBT) see the following URL: [www.iso.org/iso/foreword.html](http://www.iso.org/iso/foreword.html).

The committee responsible for this document is Technical Committee ISO/TC 268, *Sustainable development in communities*.

## Introduction

This International Standard adopts a holistic approach to the establishment of the requirements of a management system for sustainable development in communities, including cities, and provides guidance aimed at:

- improving the contribution of communities to sustainable development;
- fostering smartness and resilience in communities, while taking into account the territorial boundaries to which it applies;
- assessing the performance of communities in progressing towards sustainable development.

It sets out to establish a coherent framework to enable the community to develop its purposes and vision.

This International Standard sets out requirements and guidance to help communities achieve a framework that will allow them to become more sustainable. It does not set benchmarks or expected levels of performance.

While the challenge of sustainable development is global, the strategies for achieving it at community level are local, to a large extent, and can therefore differ in context and content from country to country and region to region. Community strategies need to reflect the context, preconditions, priorities and needs, particularly in the social environment, e.g. social equity, cultural identity and traditions, heritage, human health, safety and comfort, and social infrastructure.

In order to become more sustainable, communities also face the challenge of respecting planetary boundaries and taking into account the limitations these boundaries impose.

**NOTE 1** The concept of “planetary boundaries” describes a framework within which humanity needs to live in order to continue to develop and thrive for generations to come. Climate change, freshwater consumption, land-use change and loss of biodiversity are examples of planetary boundaries. Crossing these boundaries could generate abrupt or irreversible environmental changes, while respecting them significantly reduces risks. Planetary boundaries can be broken down in order to select measures that can be addressed at community level, while taking into account the specific situation.

The management of sustainable development in communities encompasses a wide range of issues, e.g. issues related to the economic, social and natural environment of communities and their interactions. Those issues can have strategic, operational and competitive implications.

**NOTE 2** The capacity to foster cross-discipline harmony and common purpose is fundamental to achieving a community's objectives effectively and efficiently.

This International Standard is designed to empower communities and to build on local initiatives. It targets environmental, social and economic issues, including improved community services and socio-economic benefits, as well as supporting clear purposes for sustainable development in communities and encouraging sound planning systems to achieve them.

This International Standard focuses on communities as stepping stones towards sustainability of society as a whole. Although each community has values and interests of its own, all communities can derive mutual benefits from agreeing upon ownership of shared values and objectives without exonerating individual actors from their respective responsibilities. This can be achieved only if the community applies a long-term view on planning, while respecting the Earth's overall capacity and the needs of current and future generations, including the capability and resources to provide resilience.

This International Standard fosters the establishment of a multi-actor process in communities, through a holistic approach that facilitates the cooperation of all interested parties and avoids a silo approach. It is intended to provide guidance for organizations that implement other management systems that are compatible with this International Standard, such as ISO 14001, ISO 45001, ISO 50001, ISO 20121, ISO 14046 and ISO 26000, whether involved directly or indirectly in sustainable development in communities at different stages in their life cycles.

Involvement of interested parties through a multi-actor process can take different forms, such as:

- participatory partnerships;
- public participation;
- community based collaboration.

They all aim at involving interested parties in a cooperative dialogue for more sustainable solutions.

The successful implementation of this International Standard can help communities elaborate holistic and integrated strategies for sustainable development that depart from usual business approaches. It can also help communities show interested parties that an appropriate management system is in place and encourage them to become proactive.

Successful implementation of this International Standard can:

- help to build consensus on sustainable development within communities;
- improve the sustainability, smartness and resilience of strategies, programmes, projects, plans and services conducted under the direct responsibility of communities, or on the territory they relate to;
- evolve cross-sector, multidisciplinary, life cycle value and total costing approaches;
- foster synergies between several actors through a holistic approach;
- increase the efficiency and attractiveness of communities.

The successful implementation of this International Standard is intended to establish a coherent framework to enable communities to develop their purpose and vision. Using relevant indicators and metrics, the outcome of strategies, programmes, projects, plans and services can be measured throughout communities. Metrics and indicators are connected, but often developed for different reasons. Metrics have a more technical focus, e.g. a parameter of the performance of a product, a process or an infrastructure element.

The International Standards developed by ISO/TC 268 aim to make use of indicators and metrics for structured and consistent support of sustainable, smart and resilient management of communities. Indicators such as those used in ISO 37120 are quantitative, qualitative or descriptive measures defined for actual use in monitoring and evaluating the overall performance of a community. In contrast, metrics such as those used in ISO/TS 37151 are the measurement method and measurement scale defined for use in evaluating the technical performance of infrastructure elements (hardware and software), e.g. in energy, transport or waste management services.

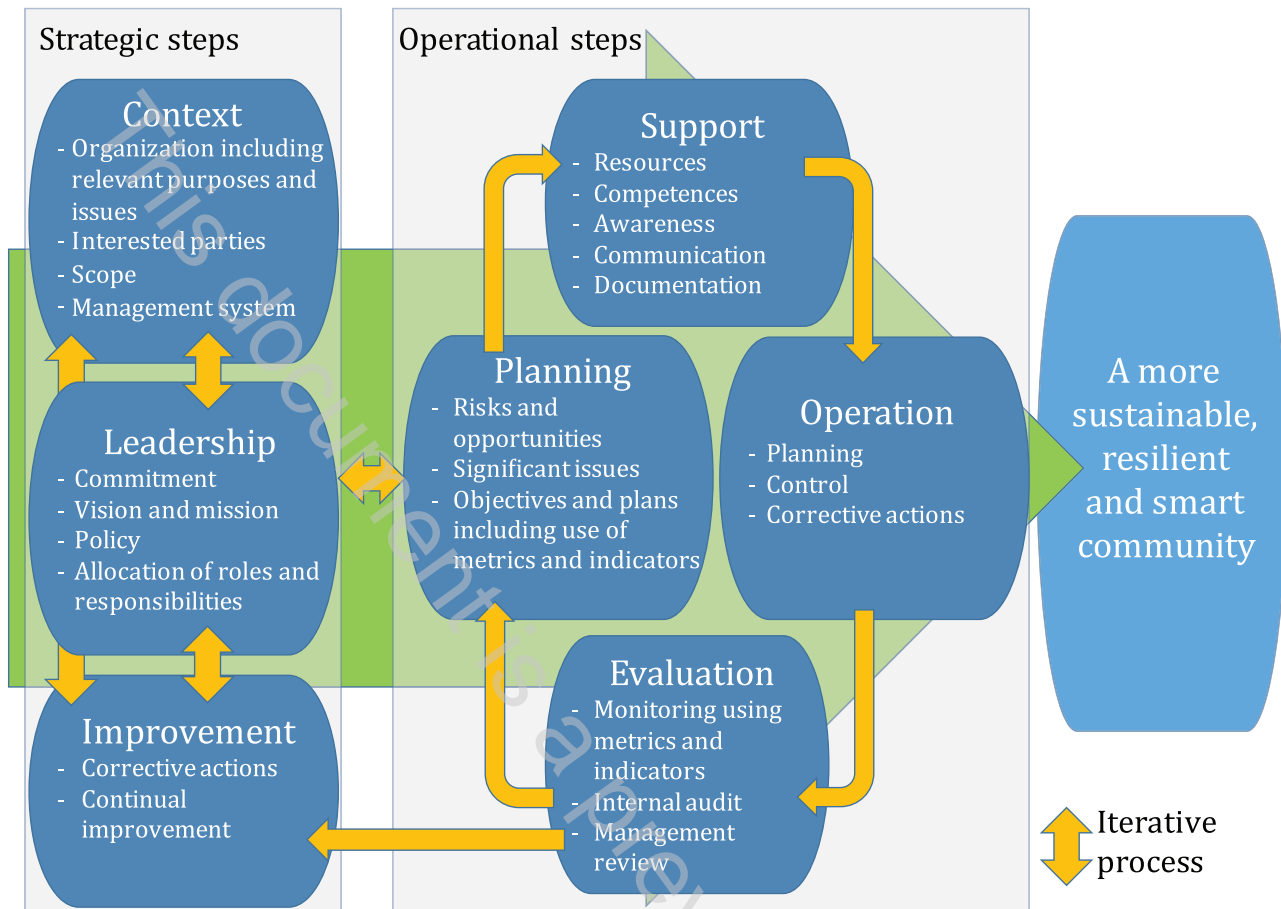
[Annex B](#) provides a mapping of issues, indicators and metrics between this International Standard, ISO 37120:2014 and ISO/TS 37151:2015

This International Standard is based on the Plan-Do-Check-Act (PDCA) model, which can be briefly described as follows:

- Plan: establish objectives and processes necessary to deliver results in accordance with community purposes;
- Do: implement processes and achieve objectives;
- Check: monitor and measure processes against community policy, objectives and commitments, and report the results;
- Act: take necessary actions to improve performance.

[Figure 1](#) illustrates how this International Standard follows a PDCA approach to the management of sustainable development in communities.





NOTE Strategic steps are iterative, while operational steps are sequential. It is their combined implementation that helps communities become more sustainable, resilient and smart.

**Figure 1 — Relationship between PDCA model and this International Standard**

In this International Standard, the following verbal forms are used:

- “shall” indicates a requirement;
- “should” indicates a recommendation;
- “may” indicates a permission;
- “can” indicates a possibility or a capability.

Information marked as “NOTE” is intended to assist the understanding or use of the document. “Notes to entry” used in [Clause 3](#) provide additional information that supplements the terminological data and can contain provisions relating to the use of a term.

# Sustainable development in communities — Management system for sustainable development — Requirements with guidance for use

## 1 Scope

This International Standard establishes requirements for a management system for sustainable development in communities, including cities, using a holistic approach, with a view to ensuring consistency with the sustainable development policy of communities.

NOTE 1 Cities have become essential actors for sustainable development at local, national and international levels over the last century, due to the pressure of unprecedented urbanization.

The intended outcomes of a management system for sustainable development in communities include:

- managing sustainability and fostering smartness and resilience in communities, while taking into account the territorial boundaries to which it applies;
- improving the contribution of communities to sustainable development outcomes;
- assessing the performance of communities in progressing towards sustainable development outcomes and the level of smartness and of resilience that they have achieved;
- fulfilling compliance obligations.

NOTE 2 Smartness and resilience are embedded in the process of sustainable development: sustainable development is the overarching process, while smartness and resilience are characteristics.

This International Standard is intended to help communities become more resilient, smart and sustainable, through the implementation of strategies, programmes, projects, plans and services, and demonstrate and communicate their achievements.

This International Standard is intended to be implemented by an organization designated by a community to establish the organizational framework and to provide the resources necessary to support the management of environmental, economic and social performance outcomes. A community that chooses to establish the organizational framework by itself is considered to constitute an organization as defined in this International Standard.

This International Standard is applicable to communities of all sizes, structures and types, in developed or developing countries, at local, regional or national levels, and in defined urban or rural areas, at their respective level of responsibility.

This International Standard can be used in whole or in part to improve the management of sustainable development in communities. Claims of conformity to this International Standard, however, are not acceptable unless all its requirements are incorporated into an organization's management system for sustainable development in communities and fulfilled without exclusion.

## 2 Normative references

There are no normative references.

## 3 Terms and definitions

For the purposes of this document, the following terms and definitions apply.