

INTERNATIONAL STANDARD

NORME INTERNATIONALE



Safety requirements for electrical equipment for measurement, control and laboratory use –

Part 2-032: Particular requirements for hand-held and hand-manipulated current sensors for electrical test and measurement

Règles de sécurité pour appareils électriques de mesurage, de régulation et de laboratoire –

Partie 2-032: Exigences particulières pour les capteurs de courant, portatifs et manipulés à la main, de test et de mesure électriques



THIS PUBLICATION IS COPYRIGHT PROTECTED

Copyright © 2012 IEC, Geneva, Switzerland

All rights reserved. Unless otherwise specified, no part of this publication may be reproduced or utilized in any form or by any means, electronic or mechanical, including photocopying and microfilm, without permission in writing from either IEC or IEC's member National Committee in the country of the requester.

If you have any questions about IEC copyright or have an enquiry about obtaining additional rights to this publication, please contact the address below or your local IEC member National Committee for further information.

Droits de reproduction réservés. Sauf indication contraire, aucune partie de cette publication ne peut être reproduite ni utilisée sous quelque forme que ce soit et par aucun procédé, électronique ou mécanique, y compris la photocopie et les microfilms, sans l'accord écrit de la CEI ou du Comité national de la CEI du pays du demandeur.

Si vous avez des questions sur le copyright de la CEI ou si vous désirez obtenir des droits supplémentaires sur cette publication, utilisez les coordonnées ci-après ou contactez le Comité national de la CEI de votre pays de résidence.

IEC Central Office
3, rue de Varembe
CH-1211 Geneva 20
Switzerland

Tel.: +41 22 919 02 11
Fax: +41 22 919 03 00
info@iec.ch
www.iec.ch

About the IEC

The International Electrotechnical Commission (IEC) is the leading global organization that prepares and publishes International Standards for all electrical, electronic and related technologies.

About IEC publications

The technical content of IEC publications is kept under constant review by the IEC. Please make sure that you have the latest edition, a corrigenda or an amendment might have been published.

Useful links:

IEC publications search - www.iec.ch/searchpub

The advanced search enables you to find IEC publications by a variety of criteria (reference number, text, technical committee,...).

It also gives information on projects, replaced and withdrawn publications.

IEC Just Published - webstore.iec.ch/justpublished

Stay up to date on all new IEC publications. Just Published details all new publications released. Available on-line and also once a month by email.

Electropedia - www.electropedia.org

The world's leading online dictionary of electronic and electrical terms containing more than 30 000 terms and definitions in English and French, with equivalent terms in additional languages. Also known as the International Electrotechnical Vocabulary (IEV) on-line.

Customer Service Centre - webstore.iec.ch/csc

If you wish to give us your feedback on this publication or need further assistance, please contact the Customer Service Centre: csc@iec.ch.

A propos de la CEI

La Commission Electrotechnique Internationale (CEI) est la première organisation mondiale qui élabore et publie des Normes internationales pour tout ce qui a trait à l'électricité, à l'électronique et aux technologies apparentées.

A propos des publications CEI

Le contenu technique des publications de la CEI est constamment revu. Veuillez vous assurer que vous possédez l'édition la plus récente, un corrigendum ou amendement peut avoir été publié.

Liens utiles:

Recherche de publications CEI - www.iec.ch/searchpub

La recherche avancée vous permet de trouver des publications CEI en utilisant différents critères (numéro de référence, texte, comité d'études,...).

Elle donne aussi des informations sur les projets et les publications remplacées ou retirées.

Just Published CEI - webstore.iec.ch/justpublished

Restez informé sur les nouvelles publications de la CEI. Just Published détaille les nouvelles publications parues. Disponible en ligne et aussi une fois par mois par email.

Electropedia - www.electropedia.org

Le premier dictionnaire en ligne au monde de termes électroniques et électriques. Il contient plus de 30 000 termes et définitions en anglais et en français, ainsi que les termes équivalents dans les langues additionnelles. Egalement appelé Vocabulaire Electrotechnique International (VEI) en ligne.

Service Clients - webstore.iec.ch/csc

Si vous désirez nous donner des commentaires sur cette publication ou si vous avez des questions contactez-nous: csc@iec.ch.

INTERNATIONAL STANDARD

NORME INTERNATIONALE



Safety requirements for electrical equipment for measurement, control and laboratory use –

Part 2-032: Particular requirements for hand-held and hand-manipulated current sensors for electrical test and measurement

Règles de sécurité pour appareils électriques de mesurage, de régulation et de laboratoire –

Partie 2-032: Exigences particulières pour les capteurs de courant, portatifs et manipulés à la main, de test et de mesure électriques

INTERNATIONAL
ELECTROTECHNICAL
COMMISSION

COMMISSION
ELECTROTECHNIQUE
INTERNATIONALE

PRICE CODE
CODE PRIX

X

ICS 19.080

ISBN 978-2-83220-405-4

Warning! Make sure that you obtained this publication from an authorized distributor.

Attention! Veuillez vous assurer que vous avez obtenu cette publication via un distributeur agréé.

CONTENTS

FOREWORD.....	4
INTRODUCTION.....	7
1 Scope and object.....	8
2 Normative references	11
3 Terms and definitions	11
4 Tests	12
5 Marking and documentation.....	12
6 Protection against electric shock	16
7 Protection against mechanical HAZARDS	22
8 Resistance to mechanical stresses	23
8.1 General	23
8.2 ENCLOSURE rigidity tests	23
9 Protection against the spread of fire	23
10 Equipment temperature limits and resistance to heat.....	24
11 Protection against HAZARDS from fluids	24
12 Protection against radiation, including laser sources, and against sonic and ultrasonic pressure	25
13 Protection against liberated gases and substances, explosion and implosion	25
14 Components and subassemblies	25
15 Protection by interlocks	26
16 HAZARDS resulting from application	26
17 RISK assessment	26
101 Measuring circuits	27
102 Prevention of HAZARD from arc flash and short-circuits.....	30
102.1 General	30
102.2 Protection against short-circuits during clamping.....	31
102.3 Protection against short-circuits in closed position	32
Annexes	33
Annex D (normative) Parts between which insulation requirements are specified (see 6.4, 6.5.3, 6.9.101 and 6.9.103)	33
Annex F (normative) ROUTINE TESTS	35
Annex K (normative) Insulation requirements not covered by 6.7	36
Annex L (informative) Index of defined terms	42
Annex AA (normative) MEASUREMENT CATEGORIES	44
Annex BB (informative) HAZARDS pertaining to measurements performed in certain environments	46
Bibliography.....	48
Figure 101 – Examples of current sensors and their parts.....	10
Figure 102 – Pre-treatment of the JAW ENDS	18
Figure 103 – CLEARANCE between the PROTECTIVE BARRIER or tactile indicator to the JAWS and to the HAZARDOUS LIVE conductor	19
Figure 104 – Treatment of the insulation of a flexible current sensor.....	21

Figure 105 – Pulley for the treatment of Figure 104	21
Figure 106 – Test probe to check protection against short-circuits	31
Figure 107 – Use of the test probe of Figure 106	32
Figure D.101 – Parts of current sensors (see also Table D.101)	33
Figure AA.1 – Example to identify the locations of measuring circuits	45
Table 101 – CLEARANCES and CREEPAGE DISTANCES for measuring circuit TERMINALS with HAZARDOUS LIVE conductive parts	17
Table 102 – Pull forces for endcaps of flexible current sensors	22
Table 103 – Energy level	23
Table 104 – Impulse voltages	26
Table 105 – Thickness of the test probe of Figure 106 and test voltages.....	32
Table D.101 – Insulation requirements between circuits and ACCESSIBLE parts of current sensors	34
Table F.101 – Test voltages for ROUTINE TESTS of JAWS of current sensors.....	35
Table K.101 – CLEARANCES for measuring circuits of MEASUREMENT CATEGORIES II, III and IV	37
Table K.102 – Test voltages for testing electric strength of solid insulation in measuring circuits of MEASUREMENT CATEGORY II	38
Table K.103 – Test voltages for testing electric strength of solid insulation in measuring circuits of MEASUREMENT CATEGORY III	38
Table K.104 – Test voltages for testing electric strength of solid insulation in measuring circuits of MEASUREMENT CATEGORY IV	39
Table K.105 – Test voltages for testing long term stress of solid insulation in measuring circuits.....	39
Table AA.1 – Characteristics of MEASUREMENT CATEGORIES	45

generated by EVS

INTERNATIONAL ELECTROTECHNICAL COMMISSION

SAFETY REQUIREMENTS FOR ELECTRICAL EQUIPMENT FOR MEASUREMENT, CONTROL AND LABORATORY USE –

Part 2-032: Particular requirements for hand-held and hand-manipulated current sensors for electrical test and measurement

FOREWORD

- 1) The International Electrotechnical Commission (IEC) is a worldwide organization for standardization comprising all national electrotechnical committees (IEC National Committees). The object of IEC is to promote international co-operation on all questions concerning standardization in the electrical and electronic fields. To this end and in addition to other activities, IEC publishes International Standards, Technical Specifications, Technical Reports, Publicly Available Specifications (PAS) and Guides (hereafter referred to as "IEC Publication(s)"). Their preparation is entrusted to technical committees; any IEC National Committee interested in the subject dealt with may participate in this preparatory work. International, governmental and non-governmental organizations liaising with the IEC also participate in this preparation. IEC collaborates closely with the International Organization for Standardization (ISO) in accordance with conditions determined by agreement between the two organizations.
- 2) The formal decisions or agreements of IEC on technical matters express, as nearly as possible, an international consensus of opinion on the relevant subjects since each technical committee has representation from all interested IEC National Committees.
- 3) IEC Publications have the form of recommendations for international use and are accepted by IEC National Committees in that sense. While all reasonable efforts are made to ensure that the technical content of IEC Publications is accurate, IEC cannot be held responsible for the way in which they are used or for any misinterpretation by any end user.
- 4) In order to promote international uniformity, IEC National Committees undertake to apply IEC Publications transparently to the maximum extent possible in their national and regional publications. Any divergence between any IEC Publication and the corresponding national or regional publication shall be clearly indicated in the latter.
- 5) IEC itself does not provide any attestation of conformity. Independent certification bodies provide conformity assessment services and, in some areas, access to IEC marks of conformity. IEC is not responsible for any services carried out by independent certification bodies.
- 6) All users should ensure that they have the latest edition of this publication.
- 7) No liability shall attach to IEC or its directors, employees, servants or agents including individual experts and members of its technical committees and IEC National Committees for any personal injury, property damage or other damage of any nature whatsoever, whether direct or indirect, or for costs (including legal fees) and expenses arising out of the publication, use of, or reliance upon, this IEC Publication or any other IEC Publications.
- 8) Attention is drawn to the Normative references cited in this publication. Use of the referenced publications is indispensable for the correct application of this publication.
- 9) Attention is drawn to the possibility that some of the elements of this IEC Publication may be the subject of patent rights. IEC shall not be held responsible for identifying any or all such patent rights.

International Standard IEC 61010-2-032 has been prepared by IEC technical committee 66: Safety of measuring, control and laboratory equipment.

The text of this standard is based on the following documents:

FDIS	Report on voting
66/474/FDIS	66/488/RVD

Full information on the voting for the approval of this standard can be found in the report on voting indicated in the above table.

This third edition cancels and replaces the second edition published in 2002. This edition constitutes a technical revision.

This edition includes the following significant technical changes with respect to the previous edition:

- a) A new Type D current sensor has been defined.
- b) The terminology for MEASUREMENT CATEGORY I has changed. In this Part 2-032, it is termed “not RATED for measurements within MEASUREMENT CATEGORIES II, III, or IV”.
- c) Requirements for markings of measuring circuit TERMINALS and JAWS have been modified.
- d) CLEARANCES and CREEPAGE DISTANCES have been added for unmated measuring circuit TERMINALS.
- e) Requirements have been added for specialized measuring circuit TERMINALS.
- f) The pull test for endcaps of flexible current sensors has been revised.
- g) Requirements for output circuit leads have been revised.
- h) Requirements have been added for temperature limits and resistance to heat to prevent thermal HAZARDS from eddy currents and high currents.
- i) Requirements for circuits or components used as TRANSIENT OVERVOLTAGE limiting devices have been revised.
- j) Requirements have been added for low battery indication.
- k) Requirements have been revised and added pertaining to REASONABLY FORESEEABLE MISUSE of measuring circuits, including usage of the current sensor in a manner that might cause arc flash.
- l) Requirements for MAINS voltage measuring circuits have been added.
- m) Requirements to prevent HAZARDS from short-circuits have been revised and located in a new Clause 102.
- n) ROUTINE TESTS have been modified.
- o) Insulation requirements for measuring circuits have been primarily located in Annex K.
- p) Annex AA has been added to describe the characteristics of MEASUREMENT CATEGORIES.
- q) Annex BB has been added to describe HAZARDS that may be encountered when using measuring circuits.

This Part 2-032 is intended to be used in conjunction with IEC 61010-1. It was established on the basis of the third edition (2010). Consideration may be given to future editions of, or amendments to, IEC 61010-1.

This Part 2-032 supplements or modifies the corresponding clauses in IEC 61010-1 so as to convert that publication into the IEC standard: *Particular requirements for HAND-HELD and hand-manipulated current sensors for electrical test and measurement*.

Where a particular subclause of Part 1 is not mentioned in this Part 2-032, that subclause applies as far as is reasonable. Where this part states “addition”, “modification”, “replacement”, or “deletion” the relevant requirement, test specification or note in Part 1 should be adapted accordingly.

In this standard:

- a) the following print types are used:
 - requirements: in roman type;
 - NOTES: in small roman type;
 - *conformity and test: in italic type*;
 - terms used throughout this standard which have been defined in Clause 3: SMALL ROMAN CAPITALS;

- b) subclauses, figures, tables and notes which are additional to those in Part 1 are numbered starting from 101; and additional list items are numbered from aa). Additional annexes are numbered AA and BB.

This publication has been drafted in accordance with the ISO/IEC Directives, Part 2.

A list of all parts of the IEC 61010 series, under the general title *Safety requirements for electrical equipment for measurement, control and laboratory use*, can be found on the IEC website.

The committee has decided that the contents of this publication will remain unchanged until the stability date indicated on the IEC web site under "<http://webstore.iec.ch>" in the data related to the specific publication. At this date, the publication will be

- reconfirmed,
- withdrawn,
- replaced by a revised edition, or
- amended.

IMPORTANT – The 'colour inside' logo on the cover page of this publication indicates that it contains colours which are considered to be useful for the correct understanding of its contents. Users should therefore print this document using a colour printer.

INTRODUCTION

IEC 61010-1 specifies the safety requirements that are generally applicable to all equipment within its scope. For certain types of equipment, the requirements of IEC 61010-1 will be supplemented or modified by the special requirements of one, or more than one, particular part 2s of the standard which are to be read in conjunction with the Part 1 requirements.

This Part 2-032 specifies the safety requirements that are generally applicable to HAND-HELD and hand-manipulated current sensors (see Clause 1).

Part 2-030 specifies the safety requirements for testing and measuring circuits which are connected for test or measurement purposes to devices or circuits outside the measurement equipment itself.

Part 2-033 specifies the safety requirements for HAND HELD METERS that have a primary purpose of measuring voltage on a live MAINS CIRCUIT.

Except for protective bonding, all requirements of Part 2-030 have been included into Part 2-032. Equipment within the scopes of Part 2-030 and Part 2-032 are considered to be covered by the requirements of Part 2-032. However, for equipment within the scope of both Part 2-032 and Part 2-033, the two standards are to be read in conjunction.

SAFETY REQUIREMENTS FOR ELECTRICAL EQUIPMENT FOR MEASUREMENT, CONTROL AND LABORATORY USE –

Part 2-032: Particular requirements for hand-held and hand-manipulated current sensors for electrical test and measurement

1 Scope and object

This clause of Part 1 is applicable except as follows:

1.1.1 Equipment included in scope

Replacement:

Replace the existing text with the following:

This part of IEC 61010 specifies safety requirements for HAND-HELD and hand-manipulated current sensors described below.

These current sensors are for measuring, detecting or injecting current, or indicating current waveforms on circuits without physically opening the current path of the circuit being measured. They may be stand-alone current sensors or accessories to other equipment or parts of combined equipment (see Figure 101). These include measurement circuits which are part of electrical test and measurement equipment, laboratory equipment, or process control equipment. The existence of these current sensors and circuits in equipment requires additional protective means between the current sensor, the circuit and an OPERATOR.

NOTE 1 This part includes also the requirements of Part 2-030. Testing and measuring circuits that are not within the scope of this part are considered to be covered by the requirements of Part 1 or other parts 2s of IEC 61010, and then will also need to meet the requirements of these other parts with the exception of Part 2-030. Current clamp meters and similar currents sensors that have a primary purpose of measuring voltage on a live MAINS CIRCUIT are also within the scope of Part 2-033.

NOTE 2 Some current sensors are also known as current clamps and current probes.

Current sensors require hand manipulation before or after a test or measurement, but do not necessarily need to be HAND-HELD during the test or measurement.

NOTE 3 Some current sensors designed for portable use can also be used for fixed installations.

The following types of current sensors are covered:

- a) Type A: a current sensor designed to be applied around or removed from UNINSULATED HAZARDOUS LIVE conductors. Type A current sensors have defined HAND-HELD or hand-manipulated parts providing protection against electric shock from the conductor being measured, and also have protection against short-circuits between wires and busbars during clamping.
- b) Type B: a current sensor which has protection against short-circuits between wires or busbars during clamping but without defined HAND-HELD or hand-manipulated parts which provide protection against electric shock during clamping. Additional protective means are necessary to avoid electric shock from HAZARDOUS LIVE conductors which cannot be de-energised during application or removal of the current sensor.

EXAMPLE 1 Flexible current sensors.

- c) Type C: a current sensor without protection against short-circuits between wires or busbars during clamping. Type C current sensors are intended to be applied to or removed

from UNINSULATED HAZARDOUS LIVE conductors or from non-limited-energy circuit conductors only when they are de-energised.

EXAMPLE 2 Split-core transducers.

- d) Type D: a current sensor designed to be applied around or removed from insulated conductors or from limited-energy circuit conductors.

A Type D current sensor does not need protection against short-circuits during clamping and has no defined HAND-HELD or hand-manipulated parts providing protection against electric shock from the conductor being measured.

EXAMPLE 3 Current probes for oscilloscopes and earth leakage current detectors.

NOTE 4 All current sensors can also be used around insulated conductors. In this case, HAZARDS are limited to acceptable levels by the insulation of the conductors.

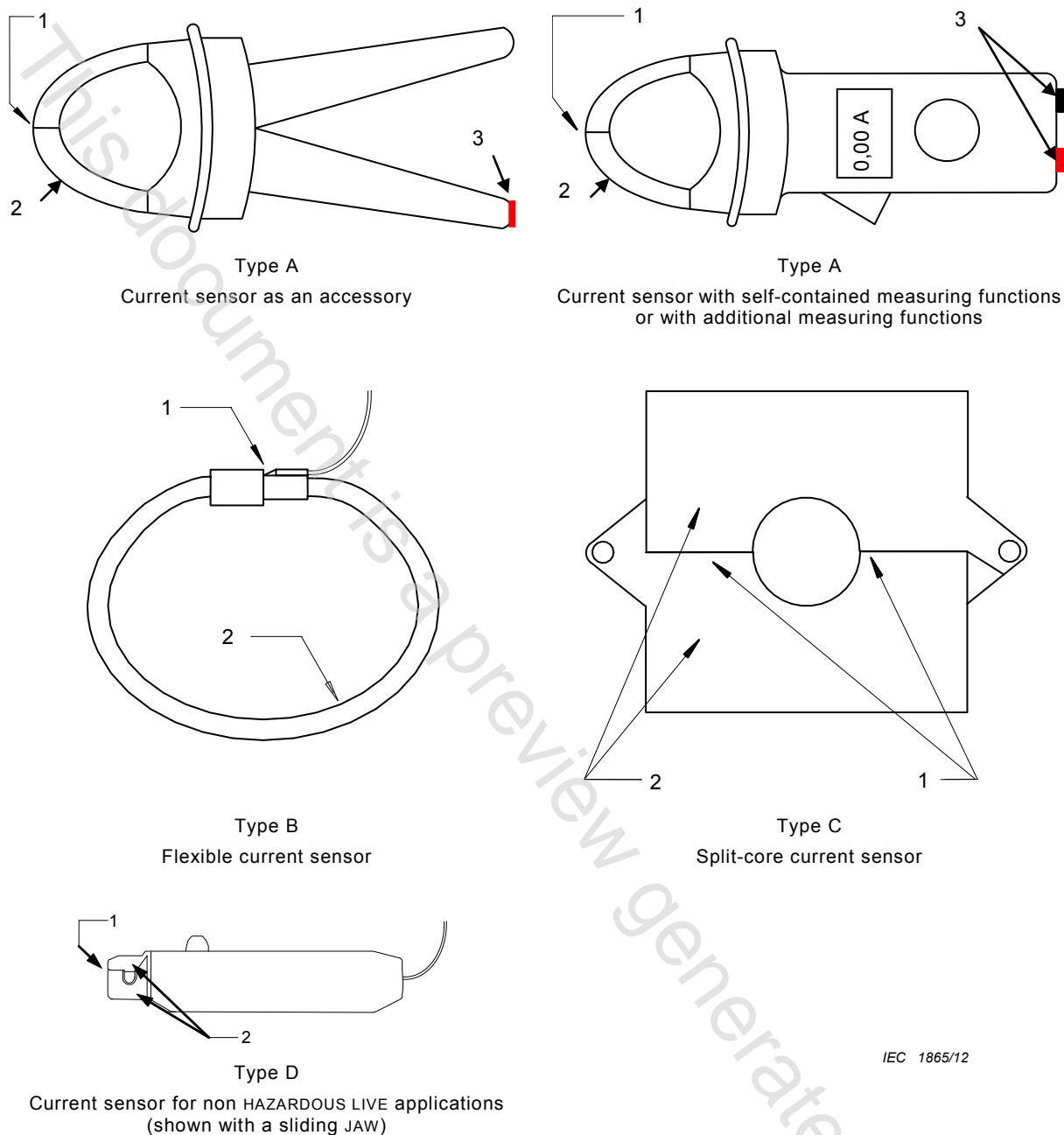


Figure 101 – Examples of current sensors and their parts

1.2.1 Aspects included in scope

Addition:

Add the following two new paragraphs at the end of the subclause:

Requirements for protection against HAZARDS resulting from NORMAL USE and REASONABLY FORESEEABLE MISUSE of measuring circuits are given in Clause 101.

Requirements for prevention of HAZARD from arc flash and short-circuits are given in Clause 102.

2 Normative references

This clause of Part 1 is applicable.

3 Terms and definitions

This clause of Part 1 is applicable except as follows:

3.1 Equipment and states of equipment

Addition:

Add the following new definition:

3.1.101

HAND-HELD

intended to be supported by one hand during NORMAL USE

3.2 Parts and accessories

Addition:

Add the following new definitions:

3.2.101

JAW

part of a current sensor which surrounds or partially surrounds the conductor under test

3.2.102

JAW END

part of the JAW where opening occurs while clamping around a conductor

3.5 Safety terms

Replacement:

Replace the definitions of 3.5.4 and 3.5.5 with the following new definitions:

3.5.4

MAINS

low-voltage electricity supply system to which the current sensor concerned is designed to be connected for the purpose of powering the current sensor or for measurements

3.5.5

MAINS CIRCUIT

circuit which is intended to be directly connected to the MAINS for the purpose of powering the current sensor or for measurements