

**Ühepoolse imemisega tsentrifugaalpumbad  
(tööpiirkonnaga 16 bar). Tähistus, nominaalne tööpunkt  
ja mõõtmed (ISO 2858:1975)**

End-suction centrifugal pumps (rating 16 bar) - Designation,  
nominal duty point and dimensions (ISO 2858:1975)

## EESTI STANDARDI EESSÕNA

## NATIONAL FOREWORD

Käesolev Eesti standard EVS-EN ISO 2858:2011 sisaldab Euroopa standardi EN ISO 2858:2010 ingliskeelset teksti.

Standard on kinnitatud Eesti Standardikeskuse 31.01.2011 käskkirjaga ja jõustub sellekohase teate avaldamisel EVS Teatajas.

Euroopa standardimisorganisatsioonide poolt rahvuslikele liikmetele Euroopa standardi teksti kättesaadavaks tegemise kuupäev on 22.12.2010.

Standard on kättesaadav Eesti standardiorganisatsioonist.

This Estonian standard EVS-EN ISO 2858:2011 consists of the English text of the European standard EN ISO 2858:2010.

This standard is ratified with the order of Estonian Centre for Standardisation dated 31.01.2011 and is endorsed with the notification published in the official bulletin of the Estonian national standardisation organisation.

Date of Availability of the European standard text 22.12.2010.

The standard is available from Estonian standardisation organisation.

ICS 23.080

### Standardite reprodutseerimis- ja levitamiseõigus kuulub Eesti Standardikeskusele

Andmete paljundamine, taastekitamine, kopeerimine, salvestamine elektroonilisse süsteemi või edastamine ükskõik millises vormis või millisel teel on keelatud ilma Eesti Standardikeskuse poolt antud kirjaliku loata.

Kui Teil on küsimusi standardite autorikaitse kohta, palun võtke ühendust Eesti Standardikeskusega:  
Aru 10 Tallinn 10317 Eesti; [www.evs.ee](http://www.evs.ee); Telefon: 605 5050; E-post: [info@evs.ee](mailto:info@evs.ee)

### Right to reproduce and distribute belongs to the Estonian Centre for Standardisation

No part of this publication may be reproduced or utilized in any form or by any means, electronic or mechanical, including photocopying, without permission in writing from Estonian Centre for Standardisation.

If you have any questions about standards copyright, please contact Estonian Centre for Standardisation:  
Aru str 10 Tallinn 10317 Estonia; [www.evs.ee](http://www.evs.ee); Phone: 605 5050; E-mail: [info@evs.ee](mailto:info@evs.ee)

English Version

End-suction centrifugal pumps (rating 16 bar) - Designation,  
nominal duty point and dimensions (ISO 2858:1975)

Pompes centrifuges à aspiration en bout (pression  
nominale 16 bar) - Désignation, point de fonctionnement  
nominal et dimensions (ISO 2858:1975)

Kreiselpumpen mit axialem Eintritt PN 16 - Bezeichnung,  
Nennleistung und Abmessungen (ISO 2858:1975)

This European Standard was approved by CEN on 4 December 2010.

CEN members are bound to comply with the CEN/CENELEC Internal Regulations which stipulate the conditions for giving this European Standard the status of a national standard without any alteration. Up-to-date lists and bibliographical references concerning such national standards may be obtained on application to the CEN-CENELEC Management Centre or to any CEN member.

This European Standard exists in three official versions (English, French, German). A version in any other language made by translation under the responsibility of a CEN member into its own language and notified to the CEN-CENELEC Management Centre has the same status as the official versions.

CEN members are the national standards bodies of Austria, Belgium, Bulgaria, Croatia, Cyprus, Czech Republic, Denmark, Estonia, Finland, France, Germany, Greece, Hungary, Iceland, Ireland, Italy, Latvia, Lithuania, Luxembourg, Malta, Netherlands, Norway, Poland, Portugal, Romania, Slovakia, Slovenia, Spain, Sweden, Switzerland and United Kingdom.



EUROPEAN COMMITTEE FOR STANDARDIZATION  
COMITÉ EUROPÉEN DE NORMALISATION  
EUROPÄISCHES KOMITEE FÜR NORMUNG

Management Centre: Avenue Marnix 17, B-1000 Brussels

## Foreword

The text of ISO 2858:1975 has been prepared by Technical Committee ISO/TC 115 "Pumps" of the International Organization for Standardization (ISO) and has been taken over as EN ISO 2858:2010 by Technical Committee CEN/TC 197 "Pumps" the secretariat of which is held by AFNOR.

This European Standard shall be given the status of a national standard, either by publication of an identical text or by endorsement, at the latest by June 2011, and conflicting national standards shall be withdrawn at the latest by June 2011.

Attention is drawn to the possibility that some of the elements of this document may be the subject of patent rights. CEN [and/or CENELEC] shall not be held responsible for identifying any or all such patent rights.

This document supersedes EN 22858:1993.

This document replaces and cancel the EN 22858 "End-suction centrifugal pumps (rating 16 bar) - designation, nominal duty point and dimensions (ISO 2858:1975)": its content is identical to the EN 22858, only the numbering of the standard has been changed, to be consistent with the ISO collection numbering.

Attention is drawn on the fact that some references cited in the standard have evolved:

ISO/R 228 replaced by ISO 228 (all parts)

ISO/R 775 has been cancelled

ISO 2084 replaced by "ISO 7005 (all parts)

According to the CEN/CENELEC Internal Regulations, the national standards organizations of the following countries are bound to implement this European Standard: Austria, Belgium, Bulgaria, Croatia, Cyprus, Czech Republic, Denmark, Estonia, Finland, France, Germany, Greece, Hungary, Iceland, Ireland, Italy, Latvia, Lithuania, Luxembourg, Malta, Netherlands, Norway, Poland, Portugal, Romania, Slovakia, Slovenia, Spain, Sweden, Switzerland and the United Kingdom.

### Endorsement notice

The text of ISO 2858:1975 has been approved by CEN as a EN ISO 2858:2010 without any modification.

# End-suction centrifugal pumps (rating 16 bar) – Designation, nominal duty point and dimensions

## 1 SCOPE AND FIELD OF APPLICATION<sup>1)</sup>

This International Standard specifies the principal dimensions and nominal duty point of end-suction centrifugal pumps having a maximum operating rating of 16 bar.<sup>2)</sup>

## 2 REFERENCES

ISO/R 228, *Pipe threads where pressure-tight joints are not made on the threads (1/8 inch to 6 inches).*

ISO 496, *Driving and driven machines – Shaft heights.*

ISO/R 775, *Cylindrical and 1/10 conical shaft ends.*

ISO 3069, *End-suction centrifugal pumps – Dimensions of cavities for mechanical seals and for soft packing (Supplement to this International Standard.)*

NOTE — ISO 2084 can be used for the dimensions of flanges.

## 3 DESIGNATION

The pump designation comprises three numbers : the first corresponds to the inlet diameter, the second to the outlet diameter and the third to the nominal diameter of the impeller.

*Example of designation*

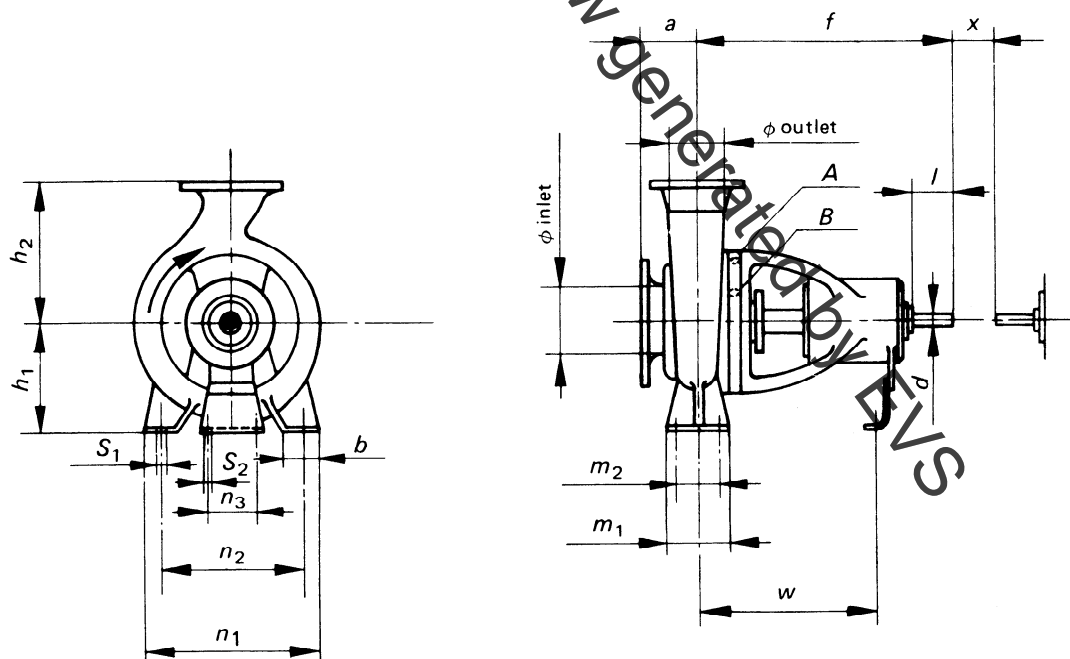
A centrifugal pump with an inlet diameter of 80 mm, an outlet diameter of 50 mm and a nominal impeller diameter of 250 mm is designated 80-50-250.

## 4 NOMINAL DUTY POINT AND DIMENSIONS

See figure below and table on page 2.

## 5 STATIC TEST PRESSURE

Static test pressure shall be 1,5 times the maximum discharge pressure but shall not exceed 24 bar. The relation between cold test pressure and hot operating pressure shall be the subject of agreement between manufacturer and user.



NOTE — Tapping points

All connections shall be in accordance with ISO/R 228.

A : Connection for cooling or heating supply to be 3/8 in.

B : Stuffing box tapping points to be as large as possible but not to exceed 1/2 in.

1) The manufacturer shall be consulted about the temperature limitation.

2) 1 bar = 0,1 MPa.