

Hoonete ventilatsioon – Elamute ventilatsiooniseadmete ja -komponentide katsetamine – Osa 2: Väljatõmbe ja sissepuhke lõppelemendid

Ventilation for buildings - Performance testing of components/products for residential ventilation - Part 2: Exhaust and supply air terminal devices

EESTI STANDARDI EESSÕNA

NATIONAL FOREWORD

Käesolev Eesti standard EVS-EN 13141-2:2010 sisaldab Euroopa standardi EN 13141-2:2010 ingliskeelset teksti.

Standard on kinnitatud Eesti Standardikeskuse 30.09.2010 käskkirjaga ja jõustub sellekohase teate avaldamisel EVS Teatajas.

Euroopa standardimisorganisatsioonide poolt rahvuslikele liikmetele Euroopa standardi teksti kättesaadavaks tegemise kuupäev on 28.07.2010.

Standard on kättesaadav Eesti standardiorganisatsioonist.

This Estonian standard EVS-EN 13141-2:2010 consists of the English text of the European standard EN 13141-2:2010.

This standard is ratified with the order of Estonian Centre for Standardisation dated 30.09.2010 and is endorsed with the notification published in the official bulletin of the Estonian national standardisation organisation.

Date of Availability of the European standard text 28.07.2010.

The standard is available from Estonian standardisation organisation.

ICS 91.140.30

Standardite reprodutseerimis- ja levitamiseõigus kuulub Eesti Standardikeskusele

Andmete paljundamine, taastekitamine, kopeerimine, salvestamine elektroonilisse süsteemi või edastamine ükskõik millises vormis või millisel teel on keelatud ilma Eesti Standardikeskuse poolt antud kirjaliku loata.

Kui Teil on küsimusi standardite autorikaitse kohta, palun võtke ühendust Eesti Standardikeskusega:
Aru 10 Tallinn 10317 Eesti; www.evs.ee; Telefon: 605 5050; E-post: info@evs.ee

Right to reproduce and distribute belongs to the Estonian Centre for Standardisation

No part of this publication may be reproduced or utilized in any form or by any means, electronic or mechanical, including photocopying, without permission in writing from Estonian Centre for Standardisation.

If you have any questions about standards copyright, please contact Estonian Centre for Standardisation:
Aru str 10 Tallinn 10317 Estonia; www.evs.ee; Phone: 605 5050; E-mail: info@evs.ee

English Version

**Ventilation for buildings - Performance testing of
components/products for residential ventilation - Part 2: Exhaust
and supply air terminal devices**

Ventilation des bâtiments - Essais des performances des
composants/produits pour la ventilation des logements -
Partie 2: Bouches d'air d'évacuation et d'alimentation

Lüftung von Gebäuden - Leistungsprüfungen von
Bauteilen/Produkten für die Lüftung von Wohnungen - Teil
2: Abluft- und Zuluftdurchlässe

This European Standard was approved by CEN on 22 April 2010.

CEN members are bound to comply with the CEN/CENELEC Internal Regulations which stipulate the conditions for giving this European Standard the status of a national standard without any alteration. Up-to-date lists and bibliographical references concerning such national standards may be obtained on application to the CEN Management Centre or to any CEN member.

This European Standard exists in three official versions (English, French, German). A version in any other language made by translation under the responsibility of a CEN member into its own language and notified to the CEN Management Centre has the same status as the official versions.

CEN members are the national standards bodies of Austria, Belgium, Bulgaria, Croatia, Cyprus, Czech Republic, Denmark, Estonia, Finland, France, Germany, Greece, Hungary, Iceland, Ireland, Italy, Latvia, Lithuania, Luxembourg, Malta, Netherlands, Norway, Poland, Portugal, Romania, Slovakia, Slovenia, Spain, Sweden, Switzerland and United Kingdom.



EUROPEAN COMMITTEE FOR STANDARDIZATION
COMITÉ EUROPÉEN DE NORMALISATION
EUROPÄISCHES KOMITEE FÜR NORMUNG

Management Centre: Avenue Marnix 17, B-1000 Brussels

Contents

Page

Foreword.....	3
1 Scope	6
2 Normative references	6
3 Terms and definitions	7
4 Performance testing of aerodynamic characteristics.....	7
4.1 Flow rate/pressure	7
4.1.1 Principle.....	7
4.1.2 Test installation, conditions and uncertainty of measurement	7
4.1.3 Test procedure	9
4.1.4 Analysis of results	10
4.1.5 Presentation of results	10
4.2 Air diffusion characteristics for supply air terminal devices	10
5 Performance testing of acoustic characteristics	10
5.1 Noise production for components of systems	10
5.1.1 General.....	10
5.1.2 Test installation.....	10
5.1.3 Test procedure	12
5.1.4 Acoustic measurement	13
5.1.5 Presentation of results	14
5.2 Insertion loss of component of systems.....	14
5.2.1 General.....	14
5.2.2 Test procedure	14
5.2.3 Preparation and mounting of the test samples	16
5.2.4 Procedure	16
5.2.5 Control of the limiting insertion loss	18
5.2.6 Calculations.....	18
5.2.7 Expression of results	19
5.3 Sound insulation characteristics of a pair of air terminal devices.....	19
5.3.1 General.....	19
5.3.2 Testing without airflow.....	21
5.3.3 Testing with airflow	21
5.3.4 Conditions for measuring background noise.....	21
5.3.5 Presentation of the results	22
Bibliography.....	23

Foreword

This document (EN 13141-2:2010) has been prepared by Technical Committee CEN/TC 156 "Ventilation for buildings", the secretariat of which is held by BSI.

This European Standard shall be given the status of a national standard, either by publication of an identical text or by endorsement, at the latest by January 2011, and conflicting national standards shall be withdrawn at the latest by January 2011.

Attention is drawn to the possibility that some of the elements of this document may be the subject of patent rights. CEN [and/or CENELEC] shall not be held responsible for identifying any or all such patent rights.

This document supersedes EN 13141-2:2004.

The position of this European Standard in the field of the mechanical building services is shown in Figure 1.

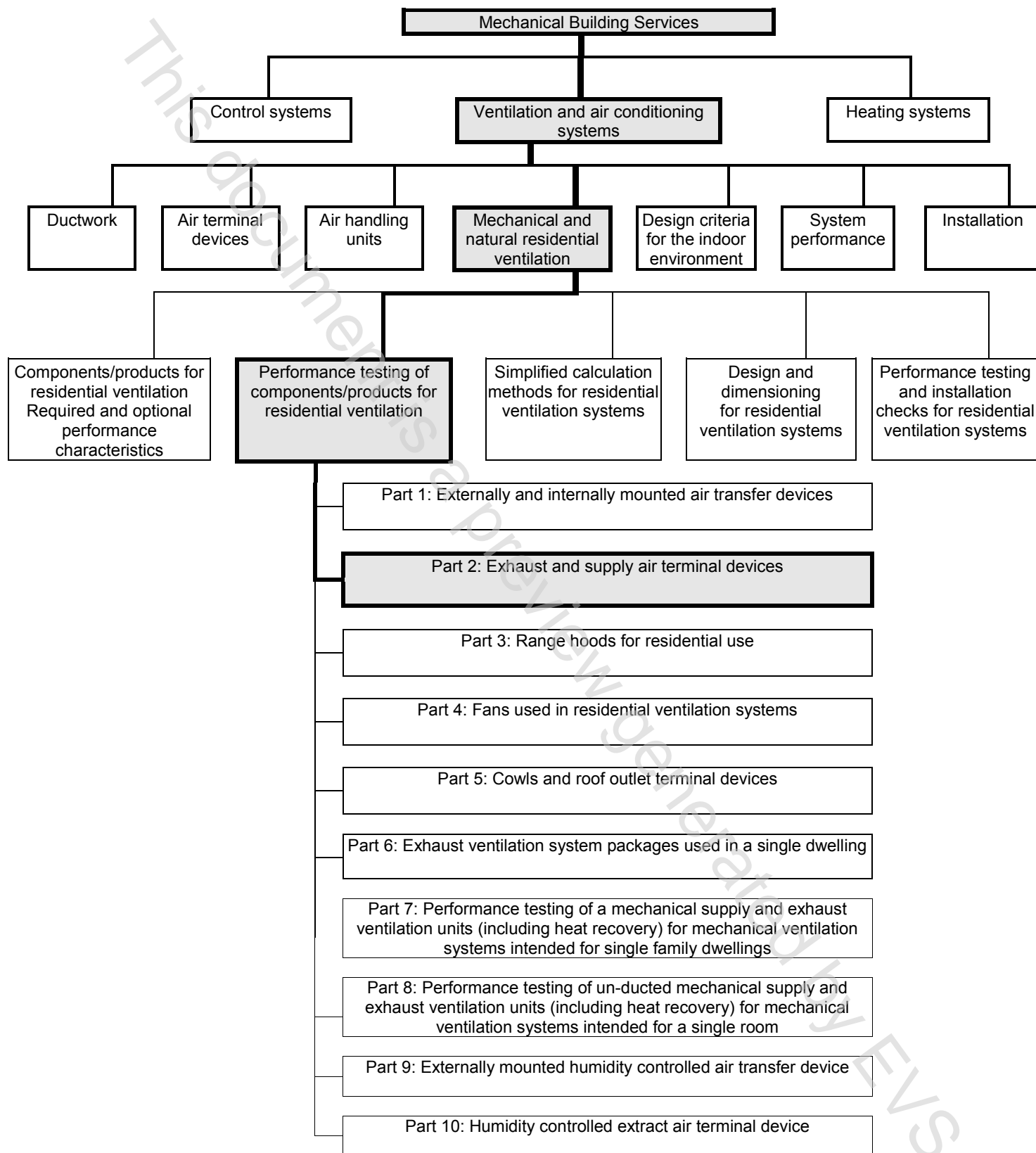


Figure 1 — Position of EN 13141-2 in the field of the mechanical building services

According to the CEN/CENELEC Internal Regulations, the national standards organizations of the following countries are bound to implement this European Standard: Austria, Belgium, Bulgaria, Croatia, Cyprus, Czech Republic, Denmark, Estonia, Finland, France, Germany, Greece, Hungary, Iceland, Ireland, Italy, Latvia, Lithuania, Luxembourg, Malta, Netherlands, Norway, Poland, Portugal, Romania, Slovakia, Slovenia, Spain, Sweden, Switzerland and the United Kingdom.

This document is a preview generated by EVS

1 Scope

This European Standard specifies laboratory methods for testing exhaust and supply air terminal devices operating under pressure differences.

It applies to devices used in mechanical and natural residential ventilation systems, of the following types:

- device with a manually adjustable opening; or
- device with a fixed opening; or
- pressure difference controlled device.

It describes tests intended to characterize:

- flow rate/pressure;
- air diffusion characteristics (for supply air terminal devices);
- noise production for components of systems;
- insertion loss of component of systems;
- sound insulation.

2 Normative references

The following referenced documents are indispensable for the application of this document. For dated references, only the edition cited applies. For undated references, the latest edition of the referenced document (including any amendments) applies.

EN 1506, *Ventilation for buildings — Sheet metal air ducts and fittings with circular cross-section — Dimensions*

EN 12238, *Ventilation for buildings — Air terminal devices — Aerodynamic testing and rating for mixed flow application*

EN 12792:2003, *Ventilation for buildings — Symbols, terminology and graphical symbols*

EN 13141-1:2004, *Ventilation for buildings — Performance testing of components/products for residential ventilation — Part 1: Externally and internally mounted air transfer devices*

EN ISO 140-3, *Acoustics — Measurement of sound insulation in buildings and of building elements — Part 3: Laboratory measurements of airborne sound insulation of building elements (ISO 140-3:1995)*

EN ISO 3741, *Acoustics — Determination of sound power levels of noise sources using sound pressure — Precision methods for reverberation rooms (ISO 3741:1999, including Cor 1:2001)*

EN ISO 5135, *Acoustics — Determination of sound power levels of noise from air-terminal devices, air-terminal units, dampers and valves by measurement in a reverberation room (ISO 5135:1997)*

EN ISO 11691:2009, *Acoustics — Measurement of insertion loss of ducted silencers without flow — Laboratory survey method (ISO 11691:1995)*

EN ISO 7235:2009, *Acoustics — Laboratory measurement procedures for ducted silencers and air-terminal units — Insertion loss, flow noise and total pressure loss (ISO 7235:2003)*

ISO 5221, *Air distribution and air diffusion — Rules to methods of measuring air flow rate in an air handling duct*

3 Terms and definitions

For the purposes of this document, the terms and definitions given in EN 12792:2003 and the following apply.

3.1

insertion loss

reduction in sound pressure level in the reverberation room due to the mounting of the air terminal device

3.2

test duct

straight, rigid hard-walled duct of constant cross section between sound source and air terminal device

3.3

reverberation room

room specially designed to facilitate the production of approximately diffuse sound fields

3.4

background noise

noise emitted by the whole sources other than the source under testing

4 Performance testing of aerodynamic characteristics

4.1 Flow rate/pressure

4.1.1 Principle

This test consists of measuring several volume flow rates induced through a device by the applied static pressure difference to define the flow rate/pressure characteristic curve in the operating range specified by the manufacturer. In the case of manually adjustable devices this test shall be carried out at maximum and minimum opening conditions specified by the manufacturer.

Some exhaust ATD are of the bi-function type, i.e. they are designed to work under both natural and mechanical ventilation system. In that case the manufacturer may have to specify two operational ranges, and the device shall be tested for each of them according the standard procedure.

4.1.2 Test installation, conditions and uncertainty of measurement

4.1.2.1 Test installation and conditions

The device to be tested shall be installed in accordance with Figure 2a) for exhaust air terminal device or Figure 2b) for supply air terminal device.

The test installation shown in Figure 2a) and Figure 2b) comprises:

- a test duct with an airflow meter, a static pressure gauge and an airflow straightener in accordance with ISO 5221. Other measurement devices may be used, provided they allow measurements with an uncertainty in accordance with 4.1.2.2;
- a fan with means to vary the pressure difference across the device, covering the range of Table 1 given in 4.1.3.

NOTE In order to avoid pumping effect, an adequate device may be added after the airflow meter.