

English Version

Child use and care articles - 2014 compiled interpretations of CEN/TC 252 standards

Articles de puériculture - Compilation des interprétations
des normes du CEN/TC 252 en 2014

This Technical Report was approved by CEN on 25 November 2014. It has been drawn up by the Technical Committee CEN/TC 252.

CEN members are the national standards bodies of Austria, Belgium, Bulgaria, Croatia, Cyprus, Czech Republic, Denmark, Estonia, Finland, Former Yugoslav Republic of Macedonia, France, Germany, Greece, Hungary, Iceland, Ireland, Italy, Latvia, Lithuania, Luxembourg, Malta, Netherlands, Norway, Poland, Portugal, Romania, Slovakia, Slovenia, Spain, Sweden, Switzerland, Turkey and United Kingdom.



EUROPEAN COMMITTEE FOR STANDARDIZATION
COMITÉ EUROPÉEN DE NORMALISATION
EUROPÄISCHES KOMITEE FÜR NORMUNG

CEN-CENELEC Management Centre: Avenue Marnix 17, B-1000 Brussels

Contents

Page

Foreword.....	3
Introduction	4
1 Scope	7
2 00252033 – EN 1273:2005, <i>Child use and care articles — Baby walking frames — Safety requirements and test methods</i>	8
3 00252059 – EN 1888:2012, <i>Child care articles — Wheeled child conveyances — Safety requirements and test methods</i>	10
4 00252051 - EN 1930:2011, <i>Child use and care articles — Safety barriers — Safety requirements and test methods</i>	13
5 00252046 - EN 12586:2007, <i>Child use and care articles – Soother holder – Safety requirements and test methods</i>	14
6 00252048 - EN 12790:2009, <i>Child use and care articles — Reclined cradles</i>	24
7 00252049 - EN 12221-1:2008 , <i>Changing units for domestic use — Part 1: Safety requirements</i>	25
8 00252050 - EN 12221-2:2008, <i>Changing units for domestic use — Part 2: Test methods</i>	28
9 00252054 - EN 1466:2004+A1:2007, <i>Child care articles — Carry cots and stands — Safety requirements and test methods</i>	29
10 00252032 - EN 14350-2:2004, <i>Child use and care articles — Drinking equipment — Part 2: Chemical requirements and tests</i>	32
11 00252089 - EN 1400:2013+A1:2014, <i>Child use and care articles - Soothers for babies and young children - Safety requirements and test methods</i>	33
12 00252024 - EN 14372:2004, <i>Child use and care articles — Cutlery and feeding utensils — Safety requirements and tests</i>	40
13 EN 16120:2012, <i>Child use and care articles - Chair mounted seat</i>	41
14 00252067 – CEN/TR 16411:2012, <i>Child use and care articles - 2012 compiled interpretations of CEN/TC 252 standards</i>	43
Annex A (informative) Interpretation 3 on 3.9 and 5.1.4.2 in EN 12586:2007, <i>Child use and care articles — Soother holder — Safety requirements and test methods</i> (WI 00252046).....	45
A.1 Introduction	45
A.2 Examples of possible ventilation holes in more recent models of soother holders	46
Annex B (informative) Reply to interpretation 3 on 3.9 and 5.1.4.2 in EN 12586:2007, <i>Child use and care articles — Soother holder — Safety requirements and test methods</i> (WI 00252046).....	48
Annex C (informative) Reply to interpretation 1 on 5.1.10 in EN 12586:2007 <i>Child use and care articles — Soother holder — Safety requirements and test methods</i> (WI 00252046).....	50
C.1 Ventilation holes in fastener (5.1.10)	50
C.2 Discussion.....	50
C.3 Final Interpretation	55
Bibliography	56

Foreword

This document (CEN/TR 16411:2014) has been prepared by Technical Committee CEN/TC 252 "Child use and care articles", the secretariat of which is held by AFNOR.

Attention is drawn to the possibility that some of the elements of this document may be the subject of patent rights. CEN [and/or CENELEC] shall not be held responsible for identifying any or all such patent rights.

This document supersedes CEN/TR 16411:2014.

The list below shows the requests for clarification/interpretation approved since 2013 plenary meeting:

N°	Standard	Title	Subject	Doc N°
1	EN 12586:2007	Soother holder (safety and test)	Ventilation holes for clips (5.1.4.2 (B.11) 6.1.9.2 (Figures 16 and 17)	N 1228
2	EN 1273:2005	Baby walking frames – Safety requirements and test methods	6.6.2.3 "tip over test"	N 1266
3	EN 16120:2012	Chair mounted seat	8.1.2 "removal of the child: case of unintentional locking device"	N 1219
4	EN 1888:2012	Wheeled child conveyances – Safety requirements and test methods	4.5.3 "The protected volume for pram body", 6 "consideration of phthalates" 8.4 "connection point of the cord/string/narrow fabric and location of the connection" 8.9.1.2.1 "brakes"	N 1215
5	EN 14350:2002	Drinking equipment	Clause 8 "Clarify of the text" in Product information	N 1194
6	EN 1400:2013+A1: 2014	Soothers for babies and young children	Clause 6 "Clarify of the text" in Product information	N 1194
7	CEN/TR 16411:2012	2012 compiled interpretations of CEN/TC 252 standards	5.1.4.2 "ventilation holes"	N°1262
8	EN 12586:2007	Soother holder - Safety requirements and test methods	5.1.4.2 "ventilation holes"	N°1262
9	EN 1400:2013+A1: 2014	Soothers for babies and young children	8.3 "axis of shield"	1255
10	EN 1400:2013+A1: 2014	Soothers for babies and young children	Various requests on the use of "should"	

Introduction

This Technical Report contains replies to requests for interpretation and clarifications with regard to the understanding of clauses in the standards elaborated within the CEN/TC 252. The replies concern those requests which have resulted in an interpretation or the decision that no action is necessary.

An interpretation does not have the same status as the text of the standard, nor can it overrule the text of the standard. However, following an interpretation should give assurance that the relevant clause of the standard has been correctly applied. An interpretation will only be regarded as a clarification of the meaning of the standard.

a) Disclaimer:

The interpretations and clarifications have been derived by expert groups of CEN/TC 252. The information contained herein is for guidance only and does not reflect the formal approval by CEN or CEN member bodies. It should be noted that the interpretations are neither part of any standard nor have been referenced in the Official Journal of the European Union.

b) Requests for interpretation:

Requests for interpretations may be submitted by a CEN member body through its national committee or by a CEN/TC 252 liaison (but not directly by an individual or a company) - in accordance with the interpretation protocols agreed by CEN/TC 252. The requests are then channelled to the relevant CEN/TC 252 working group which will deal with the request.

A request for an interpretation may lead to:

1) an interpretation of the standard:

this should reflect a reasonable interpretation of how the standard should be used, while taking into account:

- i) the wording of the standard;
- ii) the rationale of the standard;
- iii) the history of the standard;

2) a no-action decision:

this is applicable when it is agreed that the standard appropriately specifies how a child care article should be assessed;

3) a proposal for an amendment of the standard:

this is applicable when it is agreed that the standard is deficient in some way.

NOTE Interpretations are published in CEN/TR 16411, which will be updated on a regular basis.

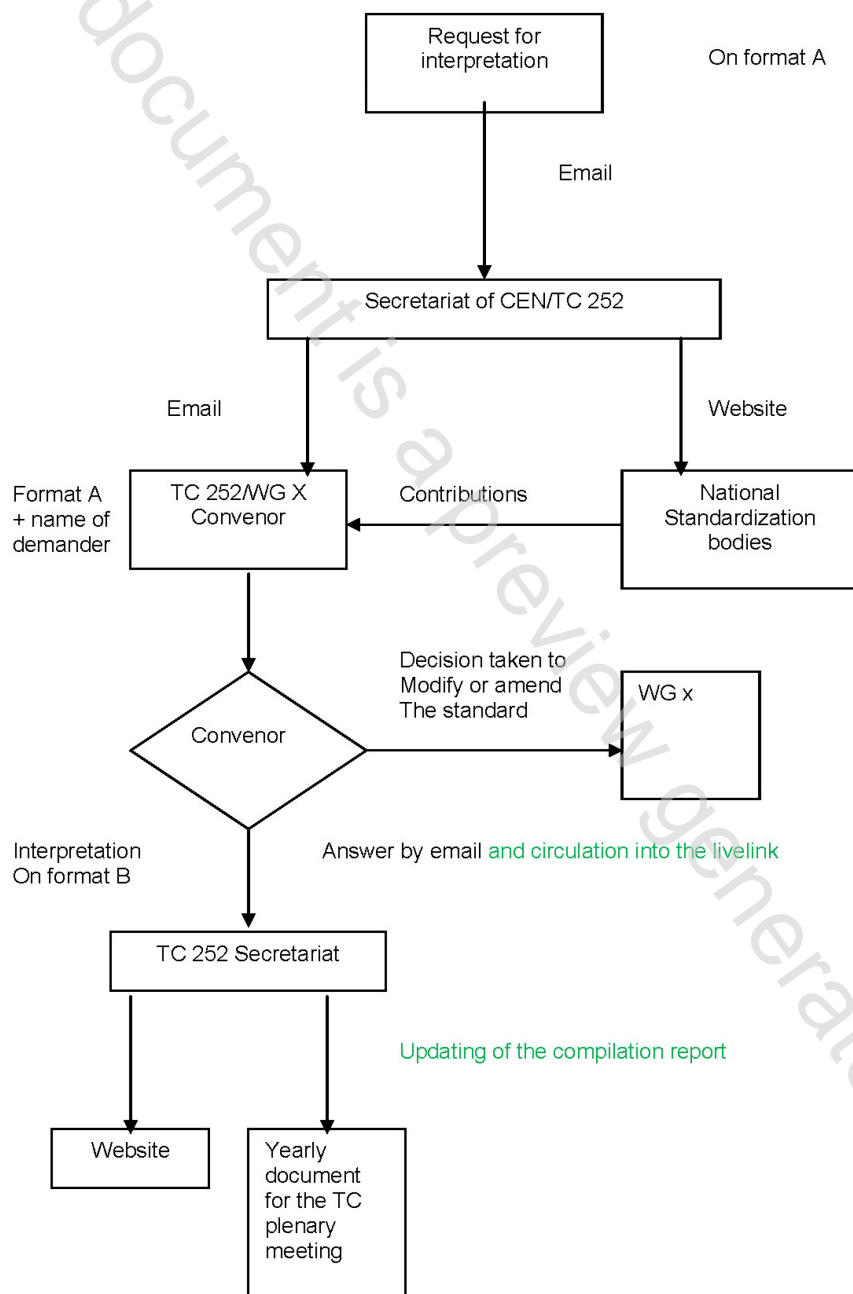
Proposals for amendments will be progressed as new work item proposals in accordance with CEN rules.

c) Answers to requests for interpretations:

Since requests for interpretations are submitted through a CEN member body, it is assumed that the member body will keep itself informed about decisions concerning the request and its progress and will itself inform the originator of the request as appropriate.

This document is a preview generated by EVS

FLOW CHART



31/05/2012

1 Scope

The purpose of this CEN Technical Report is to provide replies to requests for interpretations and clarifications of:

- EN 1273:2005, *Child use and care articles — Baby walking frames — Safety requirements and test methods*;
- EN 1888:2012, *Child care articles — Wheeled child conveyances — Safety requirements and test methods*;
- EN 1930:2011, *Child use and care articles — Safety barriers — Safety requirements and test methods*;
- EN 12586:2007, *Child use and care articles — Soother holder — Safety requirements and test methods*;
- EN 12790:2009, *Child use and care articles — Reclined cradles*;
- EN 12221-1:2008, *Changing units for domestic use — Part 1: Safety requirements*;
- EN 12221-2:2008, *Changing units for domestic use — Part 2: Test methods*;
- EN 1466:2004+A1:2007, *Child care articles — Carry cots and stands — Safety requirements and test methods*;
- EN 14350-2:2004, *Child use and care articles — Drinking equipment — Part 2: Chemical requirements and tests*;
- EN 1400-3:2002, *Child use and care articles — Soothers for babies and young children — Part 3: Chemical requirements and tests*;
- EN 1400:2013+A1:2014, *Child use and care articles — Soothers for babies and young children*
- EN 14372:2004, *Child use and care articles — Cutlery and feeding utensils — Safety requirements and tests*.
- CEN/TR 16411:2012, *Child use and care articles - 2012 compiled interpretations of CEN/TC 252 standards*