

SANITAARSEADMED. VALAMUD. FUNKTSIONAALSED
NÕUDED JA KATSEMEETODID

Sanitary appliances - Wash basins - Functional
requirements and test methods

EESTI STANDARDI EESSÕNA

NATIONAL FOREWORD

See Eesti standard EVS-EN 14688:2015 sisaldab Euroopa standardi EN 14688:2015 ingliskeelset teksti.	This Estonian standard EVS-EN 14688:2015 consists of the English text of the European standard EN 14688:2015.
Standard on jõustunud sellekohase teate avaldamisega EVS Teatajas.	This standard has been endorsed with a notification published in the official bulletin of the Estonian Centre for Standardisation.
Euroopa standardimisorganisatsioonid on teinud Euroopa standardi rahvuslikele liikmetele kättesaadavaks 29.07.2015.	Date of Availability of the European standard is 29.07.2015.
Standard on kättesaadav Eesti Standardikeskusest.	The standard is available from the Estonian Centre for Standardisation.

Tagasisidet standardi sisu kohta on võimalik edastada, kasutades EVS-i veebilehel asuvat tagasiside vormi või saates e-kirja meiliaadressile standardiosakond@evs.ee.

ICS 91.140.70

Standardite reprodutseerimise ja levitamise õigus kuulub Eesti Standardikeskusele

Andmete paljundamine, taastekitamine, kopeerimine, salvestamine elektroonsesse süsteemi või edastamine ükskõik millises vormis või millisel teel ilma Eesti Standardikeskuse kirjaliku loata on keelatud.

Kui Teil on küsimusi standardite autorikaitse kohta, võtke palun ühendust Eesti Standardikeskusega:

Aru 10, 10317 Tallinn, Eesti; koduleht www.evs.ee; telefon 605 5050; e-post info@evs.ee

The right to reproduce and distribute standards belongs to the Estonian Centre for Standardisation

No part of this publication may be reproduced or utilized in any form or by any means, electronic or mechanical, including photocopying, without a written permission from the Estonian Centre for Standardisation.

If you have any questions about copyright, please contact Estonian Centre for Standardisation:

Aru 10, 10317 Tallinn, Estonia; homepage www.evs.ee; phone +372 605 5050; e-mail info@evs.ee

English Version

**Sanitary appliances - Wash basins - Functional requirements
and test methods**

Appareils sanitaires - Lavabos - Exigences fonctionnelles et
méthodes d'essai

Sanitärausstattungsgegenstände - Waschbecken -
Funktionsanforderungen und Prüfverfahren

This European Standard was approved by CEN on 19 June 2015.

CEN members are bound to comply with the CEN/CENELEC Internal Regulations which stipulate the conditions for giving this European Standard the status of a national standard without any alteration. Up-to-date lists and bibliographical references concerning such national standards may be obtained on application to the CEN-CENELEC Management Centre or to any CEN member.

This European Standard exists in three official versions (English, French, German). A version in any other language made by translation under the responsibility of a CEN member into its own language and notified to the CEN-CENELEC Management Centre has the same status as the official versions.

CEN members are the national standards bodies of Austria, Belgium, Bulgaria, Croatia, Cyprus, Czech Republic, Denmark, Estonia, Finland, Former Yugoslav Republic of Macedonia, France, Germany, Greece, Hungary, Iceland, Ireland, Italy, Latvia, Lithuania, Luxembourg, Malta, Netherlands, Norway, Poland, Portugal, Romania, Slovakia, Slovenia, Spain, Sweden, Switzerland, Turkey and United Kingdom.



EUROPEAN COMMITTEE FOR STANDARDIZATION
COMITÉ EUROPÉEN DE NORMALISATION
EUROPÄISCHES KOMITEE FÜR NORMUNG

CEN-CENELEC Management Centre: Avenue Marnix 17, B-1000 Brussels

Contents

Page

European foreword	3
1 Scope	4
2 Normative references	4
3 Terms and definitions	4
4 Requirements	7
4.1 Load resistance	7
4.2 Draining of water	7
4.3 Resistance to temperature changes	7
4.4 Resistance to chemicals and staining agents	7
4.5 Surface stability	7
4.6 Cleanability	7
4.7 Protection against overflowing	7
4.8 Durability	8
5 Test methods	8
5.1 General	8
5.2 Load resistance	8
5.3 Draining of water	10
5.4 Resistance to temperature changes	10
5.5 Resistance to chemicals and staining agents	11
5.6 Resistance to scratching	13
5.7 Resistance to abrasion	15
5.8 Cleanability	17
5.9 Determination of flow rate of overflow	17
6 Dangerous substances	17
7 Marking and product designation	17
8 Assessment and verification of constancy of performance – AVCP	18
8.1 General	18
8.2 Type testing	19
8.3 Factory production control (FPC)	20
Annex ZA (informative) Clauses of this European Standard addressing the provisions of the EU Construction Products Regulation	22
Bibliography	30

European foreword

This document (EN 14688:2015) has been prepared by Technical Committee CEN/TC 163 "Sanitary appliances", the secretariat of which is held by UNI.

This European Standard shall be given the status of a national standard, either by publication of an identical text or by endorsement, at the latest by January 2016 and conflicting national standards shall be withdrawn at the latest by April 2017.

Attention is drawn to the possibility that some of the elements of this document may be the subject of patent rights. CEN [and/or CENELEC] shall not be held responsible for identifying any or all such patent rights.

This document supersedes EN 14688:2006.

This document has been prepared under a mandate given to CEN by the European Commission and the European Free Trade Association, and supports essential requirements of the EU Construction Products Regulation.

For relationship with EU Construction Products Regulation, see informative Annex ZA, which is an integral part of this document.

Since the latest edition of EN 14688, the most significant technical changes are the following:

- a) introduction of the term "product type";
- b) introduction of the clause "Dangerous substances";
- c) modification of the marking of products;
- d) replacement of the clause "Evaluation of conformity" by "Assessment and verification of constancy of performance - AVCP" and replacement of Annex ZA by a new one in accordance with provisions of Regulation 305/2011/EU.

According to the CEN-CENELEC Internal Regulations, the national standards organizations of the following countries are bound to implement this European Standard: Austria, Belgium, Bulgaria, Croatia, Cyprus, Czech Republic, Denmark, Estonia, Finland, Former Yugoslav Republic of Macedonia, France, Germany, Greece, Hungary, Iceland, Ireland, Italy, Latvia, Lithuania, Luxembourg, Malta, Netherlands, Norway, Poland, Portugal, Romania, Slovakia, Slovenia, Spain, Sweden, Switzerland, Turkey and the United Kingdom.

1 Scope

This European Standard specifies the functional requirements and test methods for wash basins for domestic purposes.

NOTE 1 For the purposes of this standard the term “domestic purposes” includes use in hotels, accommodation for students, hospitals and similar buildings, except when special medical provisions are required.

NOTE 2 All drawings are examples only. The shape of the appliance is left to the discretion of the manufacturer.

2 Normative references

The following documents, in whole or in part, are normatively referenced in this document and are indispensable for its application. For dated references, only the edition cited applies. For undated references, the latest edition of the referenced document (including any amendments) applies.

EN ISO 6506-1, *Metallic materials - Brinell hardness test - Part 1: Test method (ISO 6506-1)*

ISO 9352, *Plastics - Determination of resistance to wear by abrasive wheels*

3 Terms and definitions

For the purposes of this document, the following terms and definitions apply.

3.1 wash basin
sanitary appliance primarily intended for washing the upper parts of the body, with one or more bowls, each with a waste outlet hole, with or without overflow and with or without taphole(s)

Note 1 to entry: The various types of wash basins are differentiated by the methods of mounting. The main types are given in the definitions that follow.

3.1.1 wall-hung wash basin
wash basin attached directly to a wall

Note 1 to entry: See Figures 1 and 2.

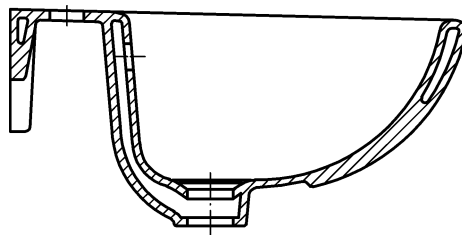


Figure 1 — Wall-hung wash basin with overflow

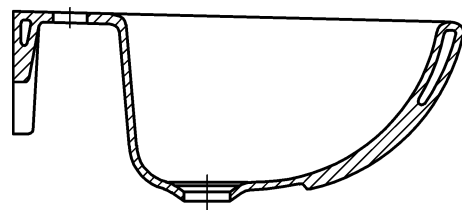


Figure 2 — Wall-hung wash basin without overflow