

**Building hardware - Electrically
controlled hold-open systems for
fire/smoke door assemblies -
Requirements, test methods,
application and maintenance**

Building hardware - Electrically controlled hold-open
systems for fire/smoke door assemblies -
Requirements, test methods, application and
maintenance

EESTI STANDARDI EESSÕNA

NATIONAL FOREWORD

<p>Käesolev Eesti standard EVS-EN 14637:2007 sisaldab Euroopa standardi EN 14637:2007 ingliskeelset teksti.</p> <p>Käesolev dokument on jõustatud 18.12.2007 ja selle kohta on avaldatud teade Eesti standardiorganisatsiooni ametlikus väljaandes.</p> <p>Standard on kättesaadav Eesti standardiorganisatsioonist.</p>	<p>This Estonian standard EVS-EN 14637:2007 consists of the English text of the European standard EN 14637:2007.</p> <p>This document is endorsed on 18.12.2007 with the notification being published in the official publication of the Estonian national standardisation organisation.</p> <p>The standard is available from Estonian standardisation organisation.</p>
--	---

<p>Käsitlusala:</p> <p>This European Standard specifies requirements, methods of test and performance criteria against which the compatibility of components and their performance can be assessed when used in combination to form an electrically controlled hold-open system. It also specifies requirements for the integrity of such hold-open systems when connected to fire detection and fire alarm systems or other systems, including the signal exchange and technical data for interfaces. This European Standard provides requirements for the application of electrically controlled hold-open systems used for fire/smoke doors in buildings, where such doors are required to be self-closing. It covers planning, design (see Annex A), installation (see Annex B), commissioning, use and maintenance (see Annex E) of hold-open systems, intended for the protection of life and/or the protection of property. This may also include hold-open systems, or components of the hold-open system, that are self-contained in a single enclosure. Electrically controlled hold-open systems manufactured, installed and serviced in accordance with this European Standard are recommended for use wherever there is a requirement for reliable hold-open and release of an individual self-closing fire/smoke door assembly in the case of fire.</p>	<p>Scope:</p> <p>This European Standard specifies requirements, methods of test and performance criteria against which the compatibility of components and their performance can be assessed when used in combination to form an electrically controlled hold-open system. It also specifies requirements for the integrity of such hold-open systems when connected to fire detection and fire alarm systems or other systems, including the signal exchange and technical data for interfaces. This European Standard provides requirements for the application of electrically controlled hold-open systems used for fire/smoke doors in buildings, where such doors are required to be self-closing. It covers planning, design (see Annex A), installation (see Annex B), commissioning, use and maintenance (see Annex E) of hold-open systems, intended for the protection of life and/or the protection of property. This may also include hold-open systems, or components of the hold-open system, that are self-contained in a single enclosure. Electrically controlled hold-open systems manufactured, installed and serviced in accordance with this European Standard are recommended for use wherever there is a requirement for reliable hold-open and release of an individual self-closing fire/smoke door assembly in the case of fire.</p>
--	--

ICS 91.060.50, 91.190

Võtmesõnad:

ICS 91.060.50; 91.190

English Version

**Building hardware - Electrically controlled hold-open systems for
fire/smoke door assemblies - Requirements, test methods,
application and maintenance**

Quincaillerie pour le bâtiment - Systèmes de retenue
contrôlés électriquement pour blocs-portes, coupe-feu ou
pare-fumée - Exigences, méthode d'essai, mise en œuvre
et maintenance

Schlösser und Baubeschläge - Elektrisch gesteuerte
Feststellanlagen für Feuer-/Rauchschutztüren -
Anforderungen, Prüfverfahren, Anwendung und Wartung

This European Standard was approved by CEN on 30 September 2007.

CEN members are bound to comply with the CEN/CENELEC Internal Regulations which stipulate the conditions for giving this European Standard the status of a national standard without any alteration. Up-to-date lists and bibliographical references concerning such national standards may be obtained on application to the CEN Management Centre or to any CEN member.

This European Standard exists in three official versions (English, French, German). A version in any other language made by translation under the responsibility of a CEN member into its own language and notified to the CEN Management Centre has the same status as the official versions.

CEN members are the national standards bodies of Austria, Belgium, Bulgaria, Cyprus, Czech Republic, Denmark, Estonia, Finland, France, Germany, Greece, Hungary, Iceland, Ireland, Italy, Latvia, Lithuania, Luxembourg, Malta, Netherlands, Norway, Poland, Portugal, Romania, Slovakia, Slovenia, Spain, Sweden, Switzerland and United Kingdom.



EUROPEAN COMMITTEE FOR STANDARDIZATION
COMITÉ EUROPÉEN DE NORMALISATION
EUROPÄISCHES KOMITEE FÜR NORMUNG

Management Centre: rue de Stassart, 36 B-1050 Brussels

Contents

Page

Foreword.....	5
Introduction	6
1 Scope	9
2 Normative references	9
3 Terms, definitions and abbreviated term	11
4 Classification.....	13
4.1 Coding system	13
4.2 Category of use (first digit)	13
4.3 Durability (second digit).....	13
4.4 Door type (third digit)	13
4.5 Suitability for use on fire/smoke door assemblies (fourth digit)	14
4.6 Safety (fifth digit)	14
4.7 Corrosion resistance (sixth digit)	14
4.8 Example of classification.....	14
5 Requirements and test methods for components of a hold-open system	15
5.1 General.....	15
5.2 Fire detectors	15
5.2.1 Smoke detectors	15
5.2.2 Heat detectors	15
5.2.3 Resetting the detectors	15
5.3 Power supply units	16
5.3.1 All power supply units	16
5.3.2 For power supply units with stand-by parallel operation.....	16
5.4 Control units.....	17
5.4.1 General.....	17
5.4.2 Control units in stand-alone hold-open systems (single-line systems)	17
5.4.3 Control units in fire detection and fire alarm systems (multi-line systems)	17
5.5 Hold-open devices	18
5.5.1 General.....	18
5.5.2 Hold-open devices for swing doors.....	18
5.5.3 Hold-open devices for sliding doors, lifting doors, industrial doors and roller shutters	18
5.5.4 Automatic door operators.....	19
5.5.5 Low energy/power assisted swing door operators	19
5.5.6 Free-swing door closers	20
5.6 Auxiliary equipment	20
5.6.1 Manual control push-buttons and switches	20
5.6.2 Presence sensors (electro-sensitive protective equipment)	20
5.6.3 Door position sensors.....	21
5.6.4 Remote indicating devices	21
5.6.5 Manual reset.....	21
6 Requirements for the hold-open system.....	21
6.1 Design and performance.....	21
6.2 Product information.....	22
6.2.1 General.....	22
6.2.2 For installation and maintenance.....	22
6.2.3 For initial hold-open system test	23
6.3 Requirements not covered under Clause 5	23
6.4 Electromagnetic compatibility (EMC)	23

6.5	Additional design requirements for connection of components to fire alarm systems	24
6.6	Electrical safety	24
6.7	Durability	24
6.8	Environmental behaviour	25
6.8.1	Dry heat	25
6.8.2	Cold	25
6.8.3	Damp heat, steady state (operational)	25
6.8.4	Corrosion	25
6.8.5	Vibration	25
6.9	Supply voltage variations	25
7	System tests	25
7.1	General	25
7.2	Test apparatus	26
7.3	Theoretical analysis	27
7.4	Test methods	27
7.4.1	General	27
7.4.2	Design verification	28
7.4.3	Performance tests	28
7.4.4	Check of switching device capabilities of the control unit	30
7.4.5	Short-circuit test	30
7.4.6	Electrical safety tests	30
7.4.7	Electromagnetic compatibility (EMC) tests	30
7.4.8	Environmental tests	31
7.4.9	Corrosion test	32
7.4.10	Vibration test, sinusoidal (operational)	33
7.4.11	Vibration test, sinusoidal (endurance)	33
8	Marking	35
8.1	Components	35
8.2	Hold-open system	35
Annex A	(informative) Recommendations for planning and design of the hold-open system	36
A.1	General	36
A.2	Restrictions	36
A.3	Detectors	36
A.3.1	Selection of detector type	36
A.3.2	Positioning and number of detectors	37
A.4	Selection of hold-open device	43
A.4.1	General	43
A.4.2	Swing doors	43
A.4.3	Sliding doors	44
A.4.4	Roller shutter and lifting doors	44
A.4.5	Automatic doors	44
A.5	Manual release and manual control	44
A.5.1	General	44
A.5.2	Location of switch/push-button	45
A.6	Interconnecting cables	45
A.7	Guidance on competence and responsibilities for individual installations in individual buildings	45
A.7.1	Planning	45
A.7.2	Installation	45
Annex B	(informative) Recommendations for installation and fixing of the hold-open system	46
Annex C	(informative) Recommendations for acceptance inspection of the hold-open system	47
Annex D	(informative) Acceptance inspection report form	48
Annex E	(informative) Recommendations for usage and maintenance of the hold-open system	50
E.1	Usage of installations	50
E.1.1	General	50
E.1.2	Periodic inspection	50

E.2	Routine site inspection report form.....	50
Annex F (informative)	Evaluation of conformity	52
F.1	General.....	52
F.1.1	Introduction	52
F.1.2	Initial type test.....	52
F.1.3	Characteristics	52
F.1.4	Use of historical data	53
F.1.5	Treatment of calculated values and design	53
F.1.6	Sampling, testing and conformity criteria.....	53
F.2	Factory production control (FPC)	53
F.2.1	General.....	53
F.2.2	FPC requirements for all manufacturers	54
F.3	Further testing of sample systems	54
F.3.1	Periodic testing	54
F.3.2	Yearly testing	54
F.3.3	Manufacturer-specific FPC system requirements.....	54
Annex G (informative)	Type test report and list of approved components	57
G.1	Test report	57
G.2	List of approved components	57
Annex H (informative)	Example methodology for theoretical analysis	58
H.1	Introduction	58
H.2	Points for analysis	58
H.2.1	General.....	58
H.2.2	List of characteristics.....	58
Bibliography	62
Figure 1	— Basic system components with essential functions.....	6
Figure 2	— Typical system with additional functions and components	7
Figure 3	— Logic diagram for modes of operation of an electrically controlled hold-open system	8
Figure A.1	— Ceiling types and critical dimensions	38
Figure A.2	— Installation area in accordance with A.3.2.1.....	39
Figure A.3	— Flow chart to determine the requisite number of detectors	40
Figure A.4	— Typical electrically controlled hold-open system with release of connected hold-open devices triggered directly by the FDAS (see A.3.2.2 a)).....	41
Figure A.5	— Typical electrically controlled hold-open system with release of connected hold-open devices by the control unit of the hold-open system driven by the information coming from the FDAS (see A.3.2.2 b))	42
Table G.1	— List of approved components	57

Foreword

This document (EN 14637:2007) has been prepared by Technical Committee CEN/TC 33 “Doors, windows, shutters, building hardware and curtain walling”, the secretariat of which is held by AFNOR.

This European Standard shall be given the status of a national standard, either by publication of an identical text or by endorsement, at the latest by May 2008, and conflicting national standards shall be withdrawn at the latest by May 2008.

This European Standard is part of a series of European Standards dedicated to building hardware products.

Attention is drawn to the possibility that some of the elements of this document may be the subject of patent rights. CEN [and/or CENELEC] shall not be held responsible for identifying any or all such patent rights.

According to the CEN/CENELEC Internal Regulations, the national standards organizations of the following countries are bound to implement this European Standard: Austria, Belgium, Bulgaria, Cyprus, Czech Republic, Denmark, Estonia, Finland, France, Germany, Greece, Hungary, Iceland, Ireland, Italy, Latvia, Lithuania, Luxembourg, Malta, Netherlands, Norway, Poland, Portugal, Romania, Slovakia, Slovenia, Spain, Sweden, Switzerland and the United Kingdom.

Introduction

The purpose of an electrically controlled hold-open system is to reliably hold open and then release self-closing fire/smoke control door assemblies at the earliest practicable moment, in the event of fire, but not to generate an alarm signal. In this regard the required function of the fire detectors is different to the normal usage of fire detectors in fire detection and fire alarm systems. In the case of hold-open systems, conforming to this European Standard, the primary objective is to release a door reliably for self-closing and any incidence of false alarms is of secondary importance. In the case of fire detection and fire alarm systems, however, the incidence of false alarms needs to be kept to the absolute minimum (See 6.1.1 and 6.1.2). This does not, however, exclude the fact that detectors of fire detection and fire alarm systems may be used to initiate door release signals. A logic diagram for modes of operation of an electrically controlled hold-open system is shown in Figure 3.

This European Standard is drafted on the basis of essential system functions and components which are provided on all electrically controlled hold-open systems and which comprise hold-open device(s), a control unit, a power supply unit, and fire detector(s) (see Figure 1). Options with requirements for additional system functions and components can also be provided, such as remote indicating devices, interconnecting cables, door position sensors, interfaces with other systems, manual controls and a stand-by power supply (see Figure 2).

It is intended that the options be used for specific applications. The optional function(s) and components are included separately, with their own set of associated requirements, in order to permit electrically controlled hold-open systems with many different combinations of functions to conform to this European Standard. Where an option is taken, corresponding requirements are included.

The performance tests incorporated in this European Standard are reproducible and, as such, will provide a consistent and objective assessment of the performance of these hold-open systems.

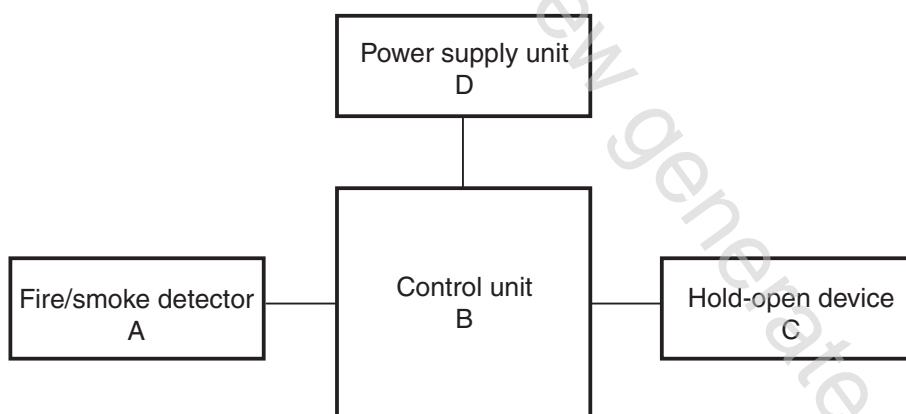
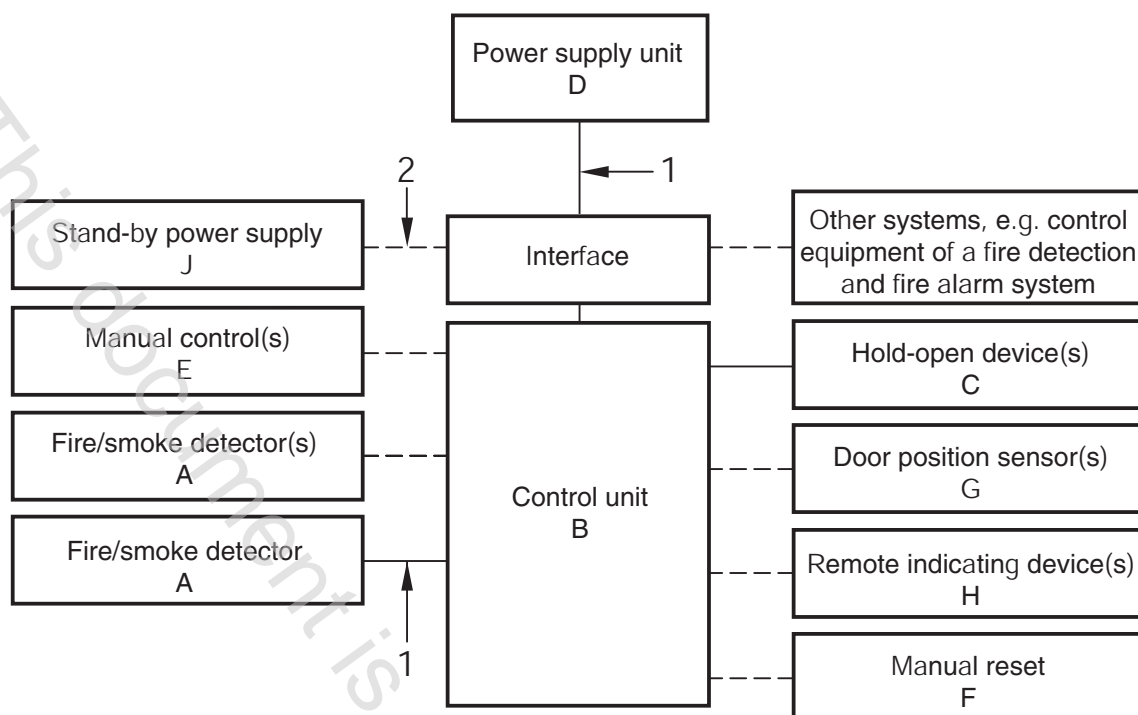


Figure 1 — Basic system components with essential functions

**Key**

- 1 Connection cable
- 2 Connection cable (optional)

NOTE The dotted lines linking various components indicate the optional components that can be included in the system.

Figure 2 — Typical system with additional functions and components

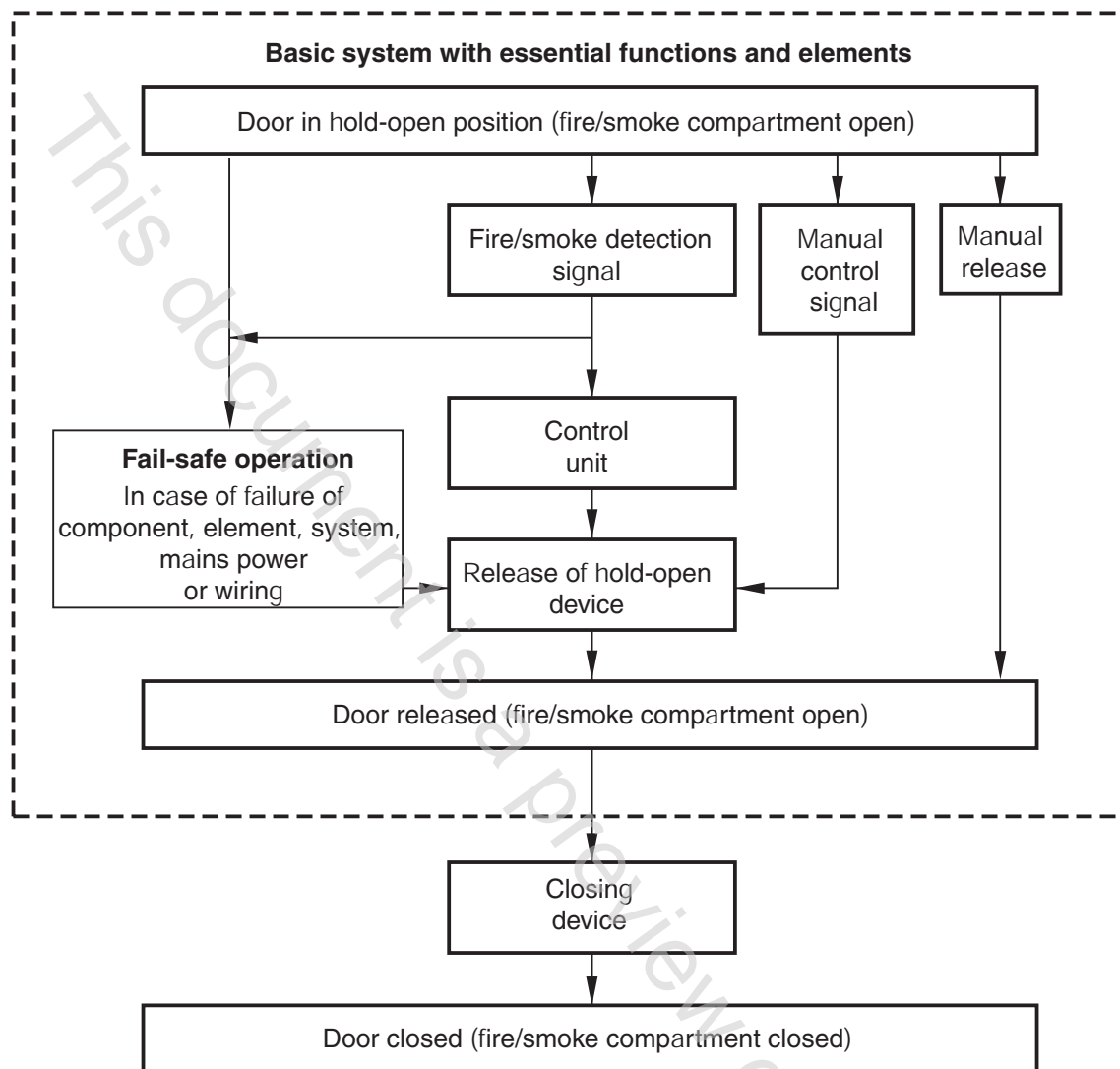


Figure 3 — Logic diagram for modes of operation of an electrically controlled hold-open system

1 Scope

This European Standard specifies requirements, methods of test and performance criteria against which the compatibility of components and their performance can be assessed when used in combination to form an electrically controlled hold-open system. It also specifies requirements for the integrity of such hold-open systems when connected to fire detection and fire alarm systems or other systems, including the signal exchange and technical data for interfaces.

This European Standard provides requirements for the application of electrically controlled hold-open systems used for fire/smoke doors in buildings, where such doors are required to be self-closing. It covers planning, design (see Annex A), installation (see Annex B), commissioning, use and maintenance (see Annex E) of hold-open systems, intended for the protection of life and/or the protection of property. This may also include hold-open systems, or components of the hold-open system, that are self-contained in a single enclosure.

Electrically controlled hold-open systems manufactured, installed and serviced in accordance with this European Standard are recommended for use wherever there is a requirement for reliable hold-open and release of an individual self-closing fire/smoke door assembly in the case of fire.

The use of hold-open systems for closures in conveyor systems conforming to EN 1366-7, which applies in conjunction with EN 1363-1, may require additional proof of suitability, which is not covered by this European Standard.

This European Standard does not cover design, installation, commissioning, use and maintenance of building fire detection and fire alarm systems (covered by CEN/TS 54-14) but does cover the connection of hold-open systems conforming to this European Standard to building fire detection and fire alarm systems, under certain prescribed conditions.

This European Standard does not cover the requirements of performance characteristics and operational environment conditions of particular components of a hold-open system, where these requirements are already covered by European specifications, and which include appropriate test methods to assure reproducible test results for the product conformity assessment. These European Standards are referred to in Clause 5.

This European Standard does not cover electrically controlled systems used for smoke venting purposes or systems that allow the door to remain open under fault conditions (i.e. not fail-safe).

This European Standard does not cover electrically controlled hold-open systems that are not connected to main power supply and are battery powered only.

2 Normative references

The following referenced documents are indispensable for the application of this document. For dated references, only the edition cited applies. For undated references, the latest edition of the referenced document (including any amendments) applies.

EN 54-1:1996, *Fire detection and fire alarm systems — Part 1: Introduction*

EN 54-2:1997, *Fire detection and fire alarm systems — Part 2: Control and indicating equipment*

EN 54-4:1997, *Fire detection and fire alarm systems — Part 4: Power supply equipment*

EN 54-5, *Fire detection and fire alarm systems — Part 5: Heat detectors — Point detectors*

EN 54-7:2000, *Fire detection and fire alarm systems — Part 7: Smoke detectors — Point detectors using scattered light, transmitted light or ionization*

CEN/TS 54-14:2004, *Fire detection and fire alarm systems — Part 14: Guidelines for planning, design, installation, commissioning, use and maintenance*

EN 1155:1997, *Building hardware — Electrically powered hold-open devices for swing doors — Requirements and test methods*

EN 1191, *Windows and doors — Resistance to repeated opening and closing — Test method*

EN 1634 (all parts), *Fire resistance and smoke control tests for door and shutter assemblies, openable windows and elements of building hardware*

EN 1670:1998, *Building hardware — Corrosion resistance — Requirements and test methods*

EN 12605, *Industrial, commercial and garage doors and gates — Mechanical aspects — Test methods*

prEN 12650-1:1996, *Building hardware — Powered pedestrian doors — Part 1: Product requirements and test methods*

EN 12978, *Industrial, commercial and garage doors and gates — Safety devices for power operated doors and gates — Requirements and test methods*

EN 60068-1, *Environmental testing — Part 1: General and guidance (IEC 60068-1:1988 + Corrigendum 1988 + A1:1992)*

EN 60068-2-1:2007, *Environmental testing — Part 2: Tests — Tests A: Cold (IEC 60068-2-1:1990)*

EN 60068-2-2:1993, *Basic environmental testing procedures — Part 2: Tests, Tests B: Dry heat (IEC 60068-2-2:1974/A1:1993)*

EN 60068-2-6:1995, *Environmental testing — Part 2: Tests — Tests Fc: Vibration (sinusoidal) (IEC 60068-2-6:1995 + Corrigendum 1995)*

EN 60068-2-78:2001, *Environmental testing — Part 2-78: Tests; Test Cab: Damp heat, steady state (IEC 60068-2-78:2001)*

EN 60669-1, *Switches for household and similar fixed-electrical installations — Part 1: General requirements (IEC 60669-1:1998, modified)*

EN 60950-1, *Information technology equipment — Safety — Part 1: General requirements (IEC 60950-1:2005, modified)*

EN 61000-3-2, *Electromagnetic compatibility (EMC) — Part 3-2: Limits — Limits for harmonic current emissions (equipment input current up to and including 16 A per phase) (IEC 61000-3-2:2005)*

EN 61000-3-3, *Electromagnetic compatibility (EMC) — Part 3: Limits — Section 3: Limitation of voltage fluctuations and flicker in low-voltage supply systems for equipment with rated current ≤ 16 A (IEC 61000-3-3:1994)*

EN 61000-6-2, *Electromagnetic compatibility (EMC) — Part 6-2: Generic standards — Immunity for industrial environments (IEC 61000-6-2:2005)*

EN 61000-6-3, *Electromagnetic compatibility (EMC) — Part 6-3: Generic standards; Emission standard for residential, commercial and light-industrial environments (IEC 61000-6-3:2006)*